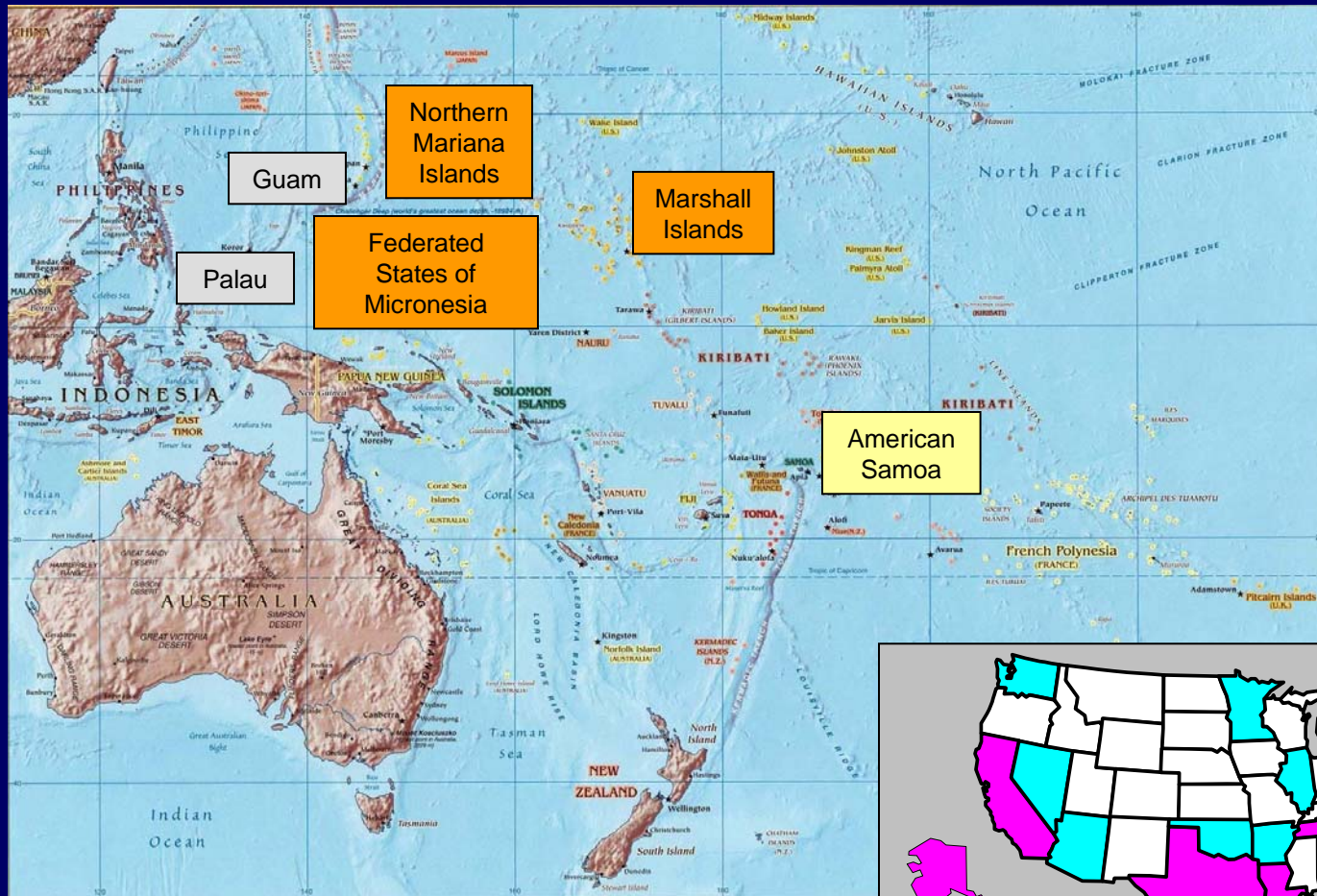
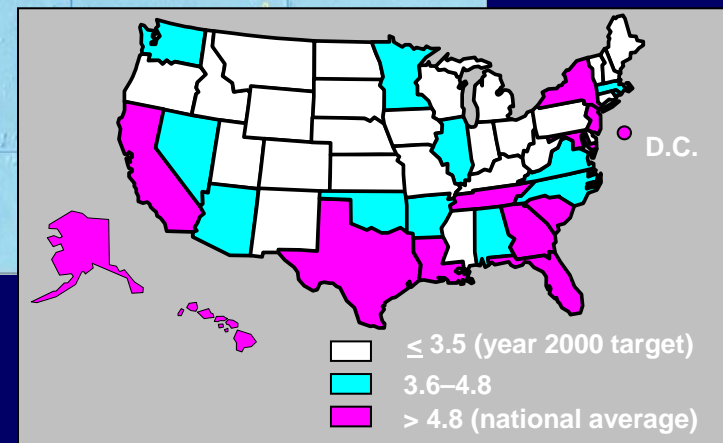


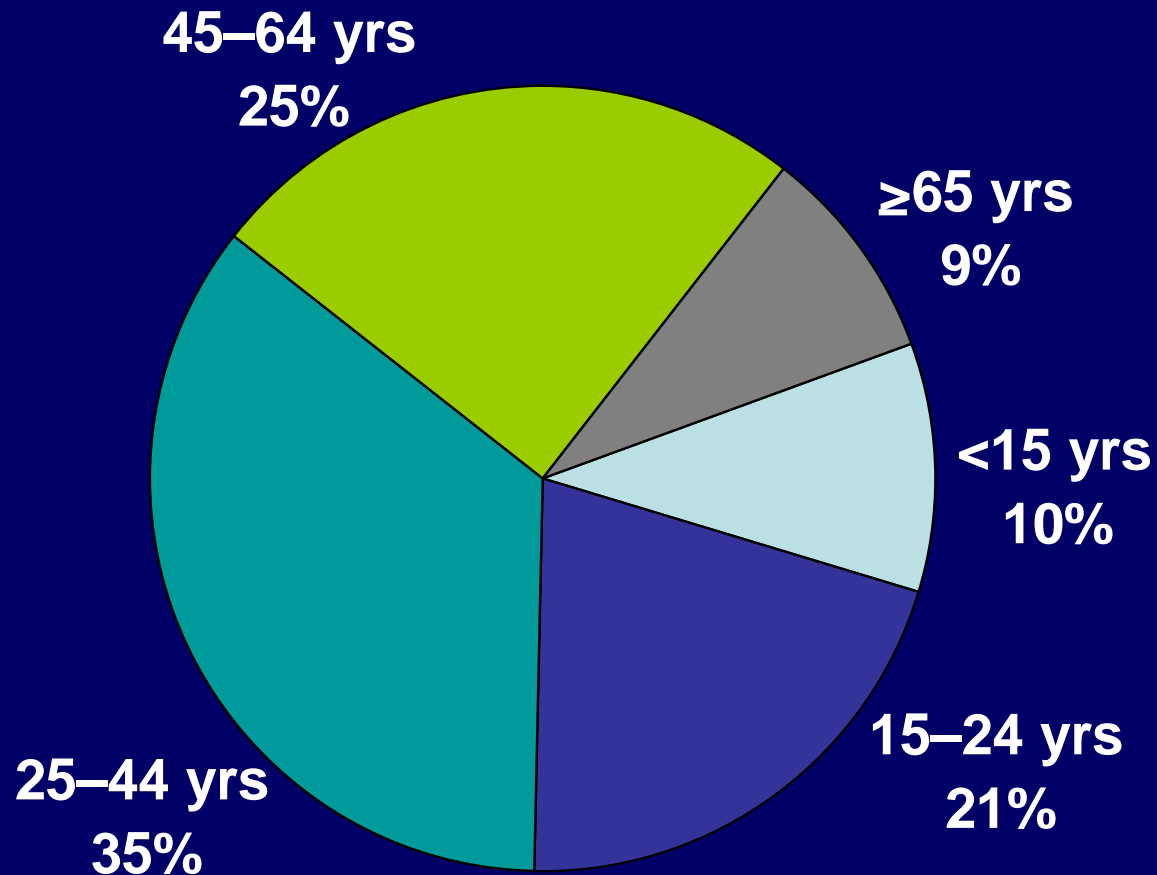
# TB Case Rates,\* U.S.-Affiliated Pacific Islands, 2005



\*Cases per 100,000  
 \*\*National average



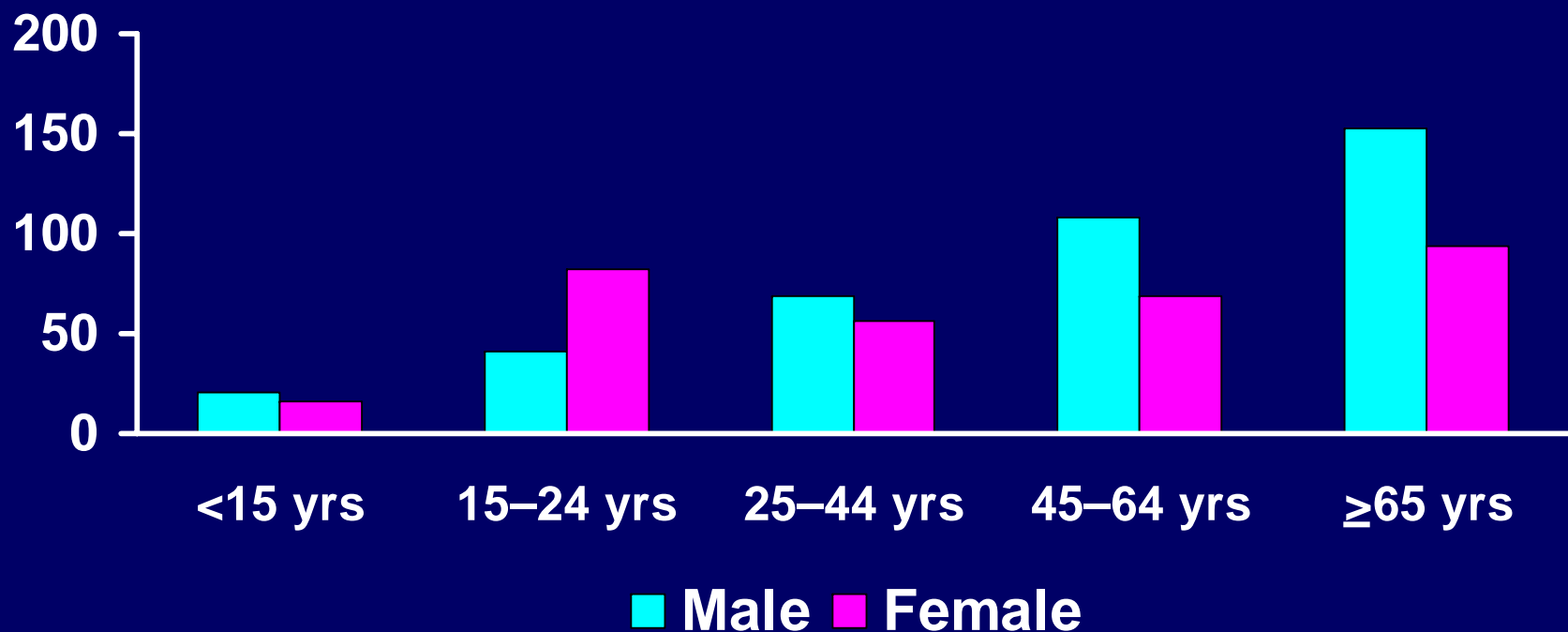
# Reported TB Cases by Age Group U.S.-Affiliated Pacific Islands, 2005



Note: Excludes missing or unknown

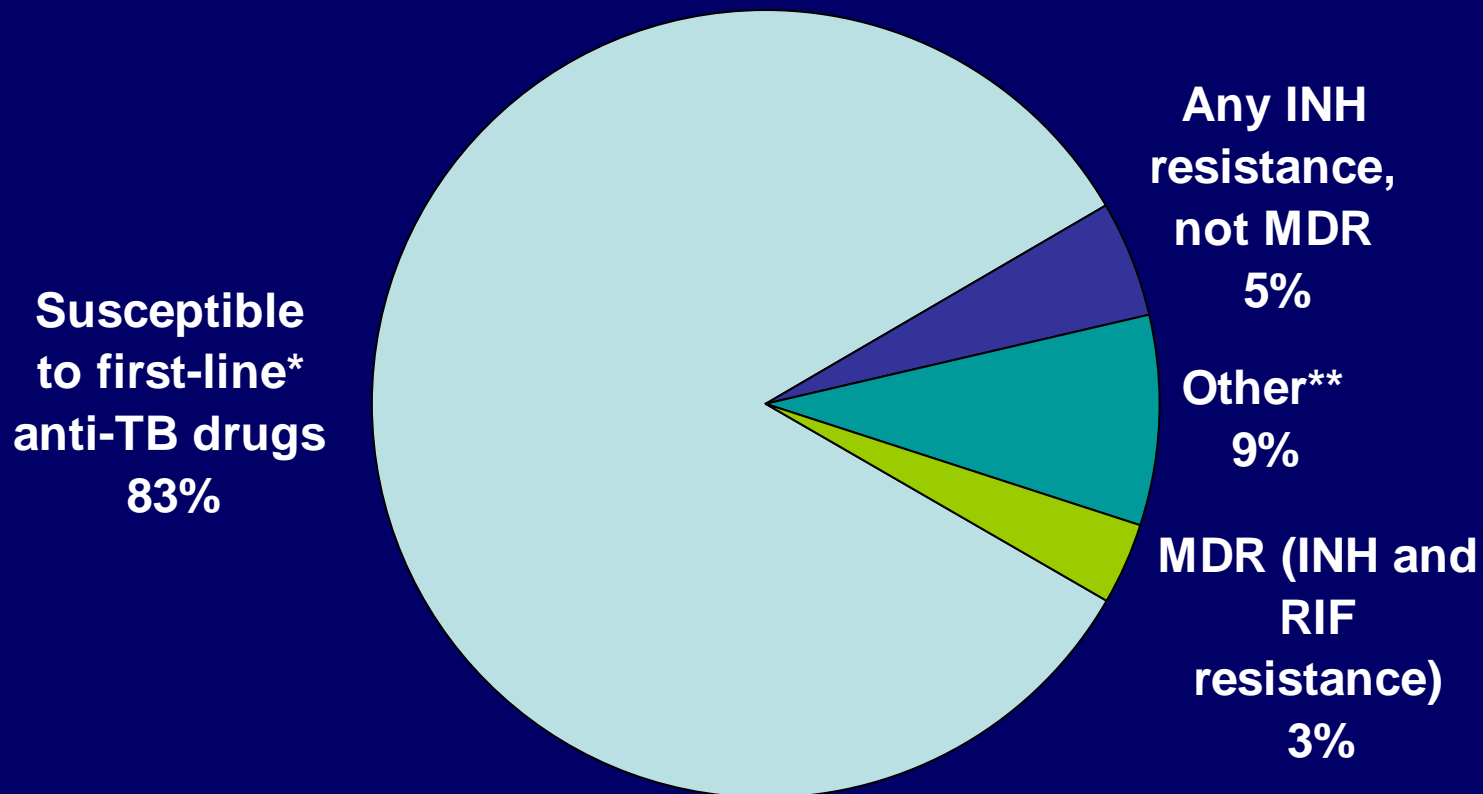
N = 273

# TB Case Rates\* by Age Group and Sex, U.S.-Affiliated Pacific Islands, 2005



\*Cases per 100,000.

# Anti-TB Drug Susceptibility, U.S.- Affiliated Pacific Islands, 2005



\*INH, RIF, PZA, EMB

\*\*Other resistance (not MDR or INH resistant) or missing testing to at least one first-line drug

Note: Data reflects results for 125 of 138 culture positive isolates for which drug sensitivity testing results were available.