



Investigating in Special Settings

Stepheni A. Appleby, RN
September 13, 2022

TB Contact Investigation 101
September 13-14, 2022
Little Rock, AR



Investigating in Special Settings

Stepheni A. Appleby, RN
September 13, 2022

TB Contact Investigation 101
September 13-14, 2022
Little Rock, AR



Presentation adapted from

Raiza M. Ruiz, BAAS, CPM

Public Health Program Specialist

Austin/Travis County Health and Human Services

Objectives

- Define a “special setting”
- Explain the process of a contact investigation in a special setting



Special Settings

- Generally we are talking about congregate settings
- Settings where multiple individuals are likely to spend extended periods of time together in a confined area
- May or may not involve sleeping arrangements
- Frequently complicated by “worried well” situations

What are some of these settings?

- Correctional Facilities
- Homeless facilities
- Workplaces
- Hospitals and Other Health Care Settings
- Schools
- Transportation Modes
- Drug and Alcohol Usage Sites
- Special Sites Not Under Jurisdiction

Congregate Settings

- substantial numbers of contacts
- incomplete information regarding contact names and locations
- incomplete data for determining priorities
- difficulty in maintaining confidentiality
- collaboration with officials and administrators who are unfamiliar with TB
- legal implications
- media coverage

Special Considerations

- Many times special settings or congregate setting investigations require intense on-site involvement
- Confidentiality can be very difficult and should be constantly monitored to assure best practice
- Relationship building is CRUCIAL to success
- Requires “out of the box” approaches, strategies and thinking

Potential Learning

- Expect to include education
- Expect to develop new tools
- Expect to find new allies
- Expect to face opposition
- Expect the unexpected!!!



Correctional Facilities

- Special security issues
- Media concerns
- Overcrowded
- Great breeding grounds
- High risk individuals on many levels
- Highest concentration of “lawyers”
- Baseline testing advantages
- Great opportunity for short TB Infection treatment



Homeless Facilities

- Transient by nature
- Mental illness
- Poor historians
- Contact names
- Community panic
- Multi cultural
- Multiple other health care concerns



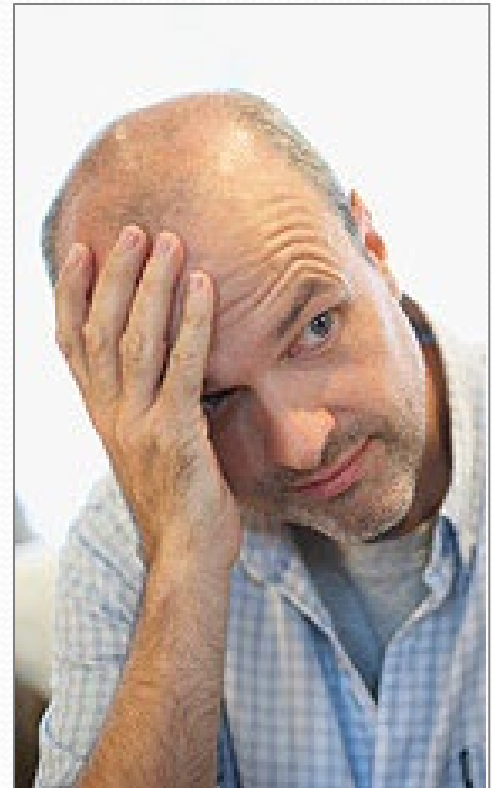
Workplaces



- Many individuals spending many hours together
- Customer concerns
- Worried well
- Lack of TB understanding
- Interruption to profits
- Workers comp concerns
- Confidentiality is a major concern-Everyone knows who is out

Worried Well

- Those who were not identified or contacted by the health department but want to be tested anyway.
- Should not be screened
 - But my boss said I have to ☹



Hospitals and Other Health-Care Settings

- Medical egos
- Lack of understanding of TB
- Other patient concerns
- Reputation
- Regulatory concerns
- Baseline testing advantages



Schools

- Community panic
- Worried well
- Media
- Multiple collaborations
- Multi cultural
- Parental consents
- Source Case Investigations
- Lack of transmission understanding



Transportation Modes



- Airplanes, trains, automobiles
- Plan
 - ❖ >8 hours exposure
- Incident report and referrals
 - ❖ DSHS
 - ❖ Other Health Departments

Drug and Alcohol Usage Sites

- Social network models
- Lack of contact ID knowledge
- Unwillingness to disclose
- Close proximity
- Poor ventilation
- HIV association to many
- Repetitive exposures



Special Sites Not Under Jurisdiction

- Military Bases
- Diplomatic house/facilities
- Reservations
- Technical assistance
- Cooperation
- Relationship building



Questions?



