

1

***Salma Lerma MSN, RN*** has the following disclosures to make:

---

- No conflict of interests
- No relevant financial relationships with any commercial companies pertaining to this educational activity

HEARTLAND

2



## Objectives

- ✓ What is TB?
- ✓ How is TB transmitted?
- ✓ Latent TB vs. TB Disease
- ✓ Risk factors for TB
- ✓ TB Classification System

3

## What is Tuberculosis



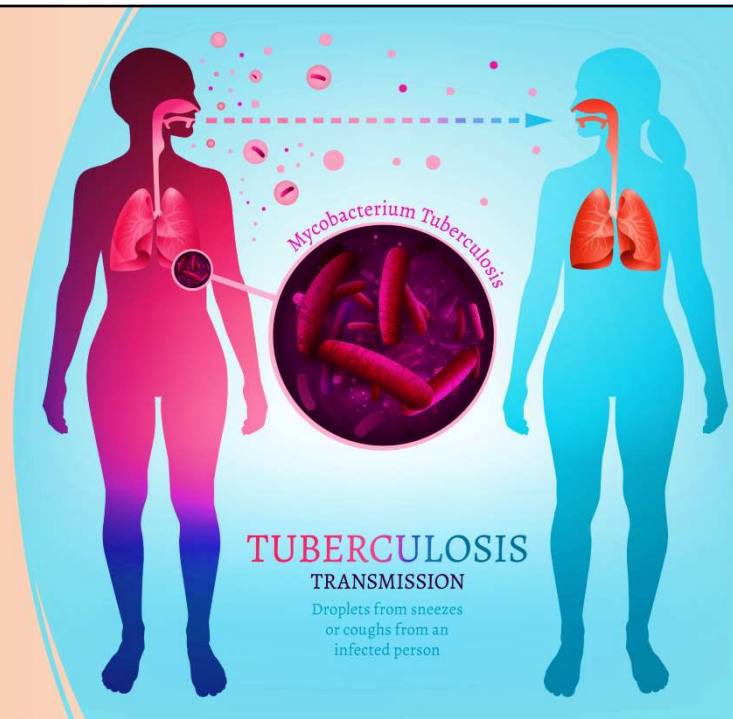
- TB is an airborne disease caused by the bacterium *Mycobacterium tuberculosis* (*M. tuberculosis*)
- Discovered March 24, 1882 by Dr. Robert Koch as a bacterial disease that mainly affects the lungs
- Although TB most commonly affects the lungs it can also affect: lymph nodes, pleura, bone and joints, urogenital tract, and meninges, this is known as extrapulmonary TB.

4

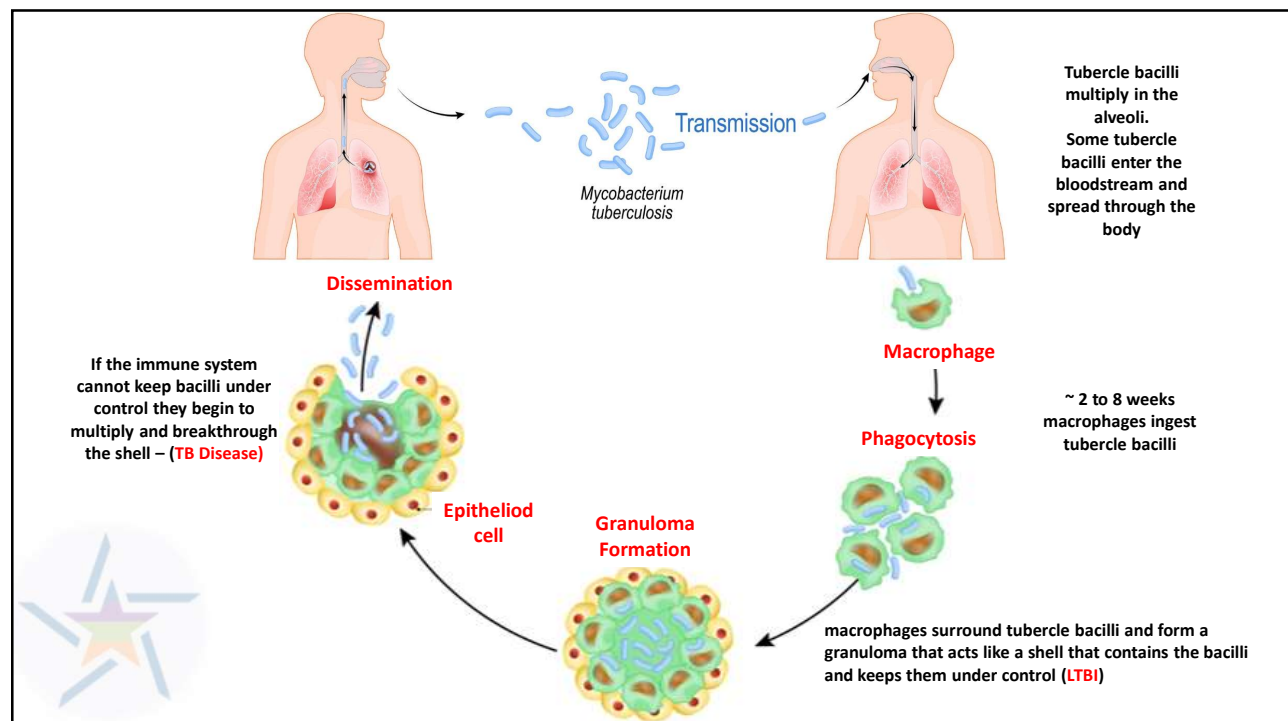
# Transmission

TB spreads through the air from one person to another when a person with pulmonary or laryngeal TB disease:

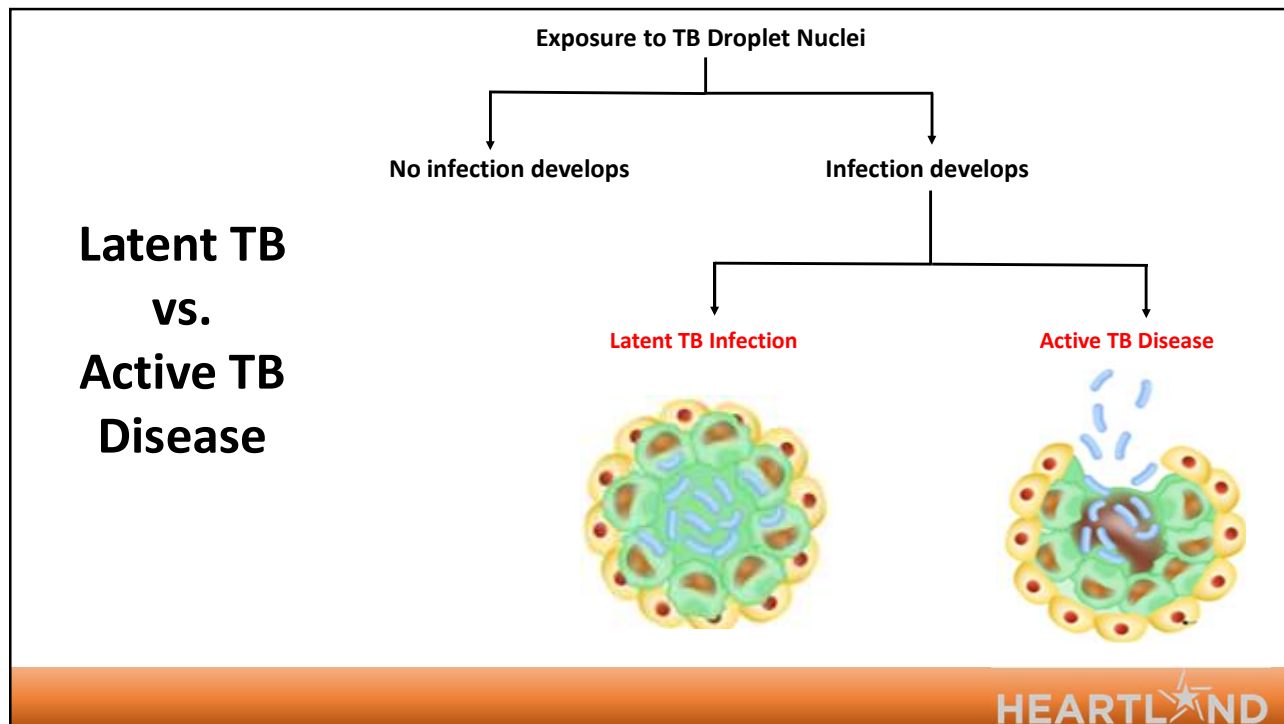
- Coughs
- Speaks
- Sings
- Sneezes



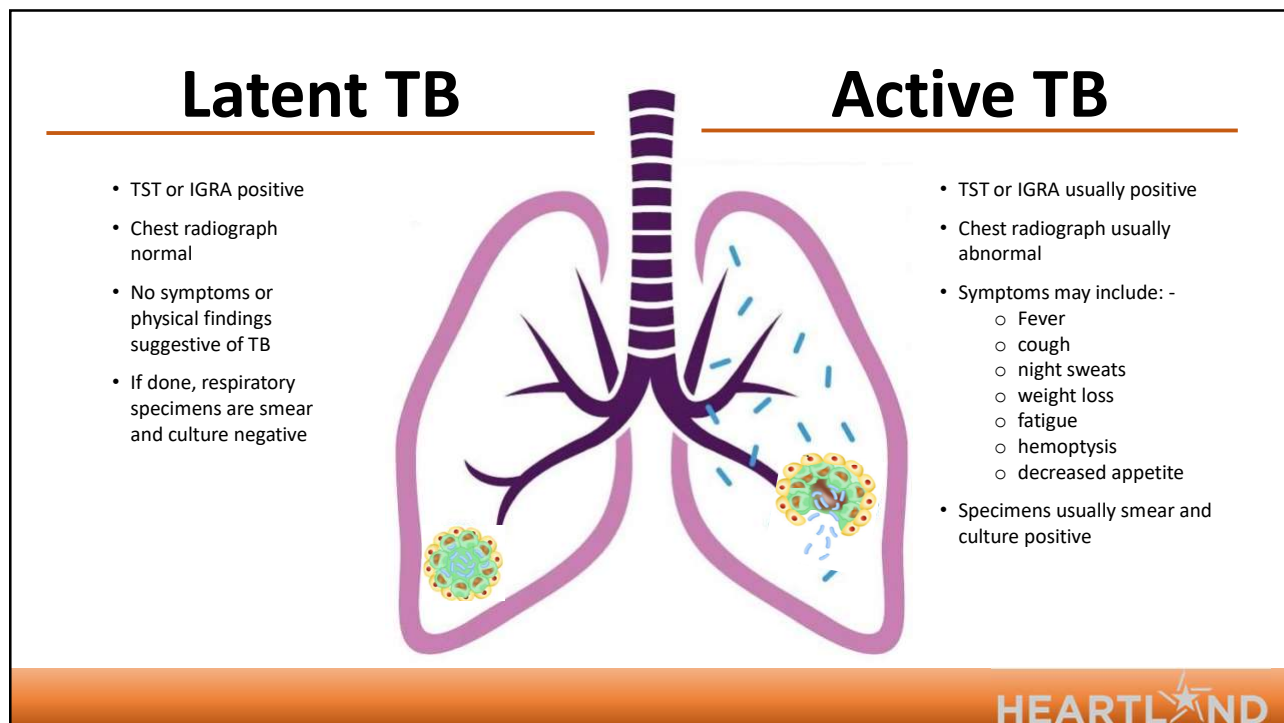
5



6



7



8

## Who is at risk of TB exposure?



Close **contacts** to persons with infectious TB



Residents and employees of high-risk **congregate** settings



People with health problems that make it hard to fight TB disease



**Recent immigrants** from TB-endemic regions of the world (within 5 years of arrival to the U.S.)

HEARTLAND

9

## Individuals at Increased Risk for **Progression** to TB Disease

Persons with HIV



Underweight or malnourished persons

Those with a history of prior, untreated TB or fibrotic lesions on chest radiograph



Substance users

Children 5 years old with a positive TST



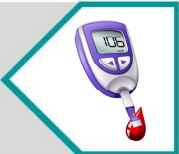

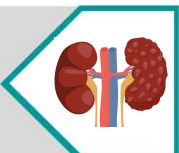



Those receiving TNF alpha antagonist for treatment of rheumatoid arthritis or Crohn's disease.

10



## Medical Conditions that Increase the Risk for Progression to TB Disease

Silicosis			Solid organ transplantation
Diabetes Mellitus			Cancer of the head or neck
Chronic renal failure or on hemodialysis			Gastrectomy or jejunal bypass

11

## TB Classification System



0

No TB exposure-  
**Not** infected

- No history of TB exposure and no evidence of *M. tuberculosis* infection or disease
- Negative reaction to TST or IGRA

1

TB exposure-  
No evidence of infection

- History of exposure to *M. tuberculosis*
- Negative reaction to TST or IGRA (test given at least 8 to 10 weeks after exposure)

2

TB infection-  
No TB disease

- Positive reaction to TST or IGRA
- Negative bacteriological studies (smear and cultures)
- No clinical or radiographic evidence of active TB disease

3

TB disease  
clinically active

- Positive culture for *M. tuberculosis* **OR**
- Positive reaction to TST or IGRA, plus clinical bacteriological, or radiographic evidence of current active TB disease

4

Previous TB disease  
(**not**) clinically active

- May have past medical history of TB disease
- Abnormal but stable radiographic findings
- Positive reaction to the TST or IGRA
- Negative bacteriological studies (smear and cultures)
- No clinical or radiographic evidence of current active TB disease

5

TB disease  
suspected

- Signs and symptoms of active TB disease, but medical evaluation **not** complete

12



13



14

## References

- David M. Lewinsohn,<sup>1,a</sup> Michael K. Leonard,<sup>2,a</sup> Philip A. LoBue,<sup>3,a</sup> David L. Cohn,<sup>4</sup> Charles L. Daley,<sup>5</sup> Ed Desmond,<sup>6</sup> Joseph Keane,<sup>7</sup> Deborah A. Lewinsohn,<sup>1</sup> Ann M. Loeffler,<sup>8</sup> Gerald H. Mazurek,<sup>3</sup> Richard J. O'Brien,<sup>9</sup> Madhukar Pai,<sup>10</sup> Luca Richeldi,<sup>11</sup> Max Salfinger,<sup>12</sup> Thomas M. Shinnick,<sup>3</sup> Timothy R. Sterling,<sup>13</sup> David M. Warshauer,<sup>14</sup> and Gail L. Woods<sup>15</sup>.  
*Official American Thoracic Society/Infectious Diseases Society of America/Centers for Disease Control and Prevention Clinical Practice Guidelines: Diagnosis of Tuberculosis in Adults and Children*
- <https://www.cdc.gov/tb/publications/guidelines/default.htm>
- [Diagnostic Standards / Classification of TB in Adults and Children](#)<sup>external icon</sup>  
Am J Respir Crit Care Med 2000; 161

15

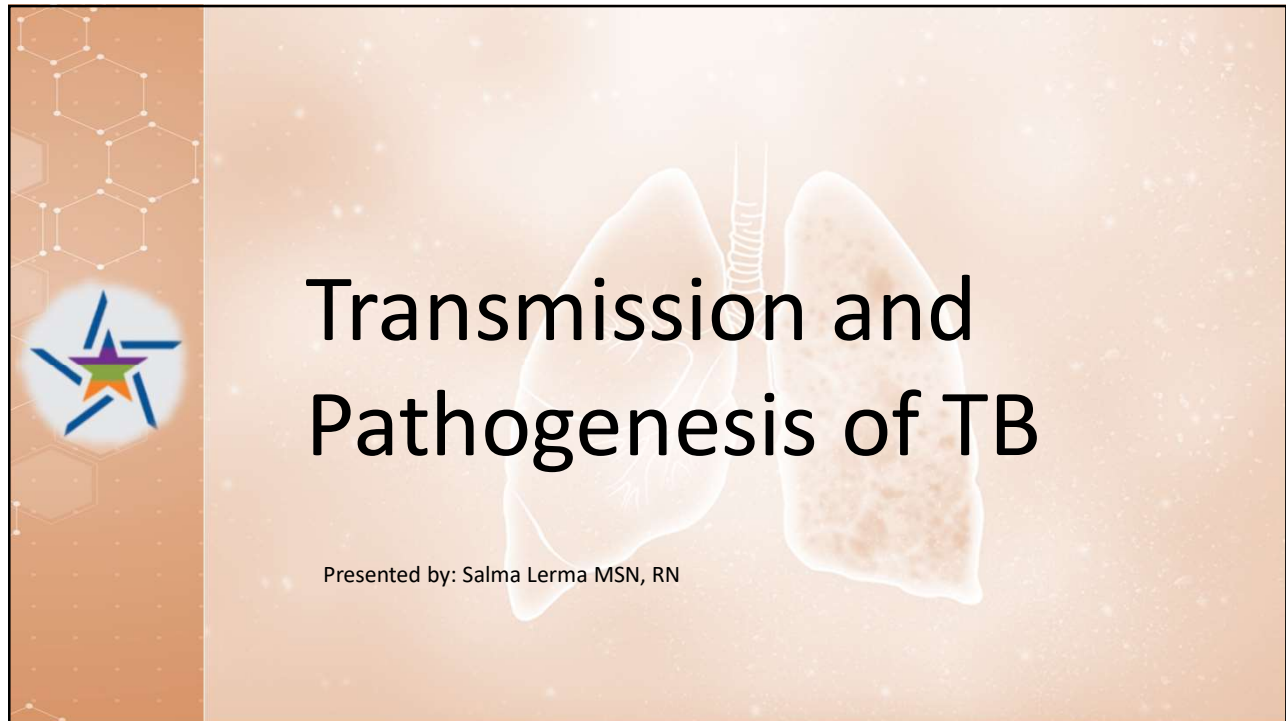


THANK YOU

*Acknowledgement to Marybel Monreal, RN*

16





1

***Salma Lerma MSN, RN*** has the following disclosures to make:

---

- No conflict of interests
- No relevant financial relationships with any commercial companies pertaining to this educational activity

HEARTLAND

2



## Objectives

- ✓ What is TB?
- ✓ How is TB transmitted?
- ✓ Latent TB vs. TB Disease
- ✓ Risk factors for TB
- ✓ TB Classification System

3

## What is Tuberculosis



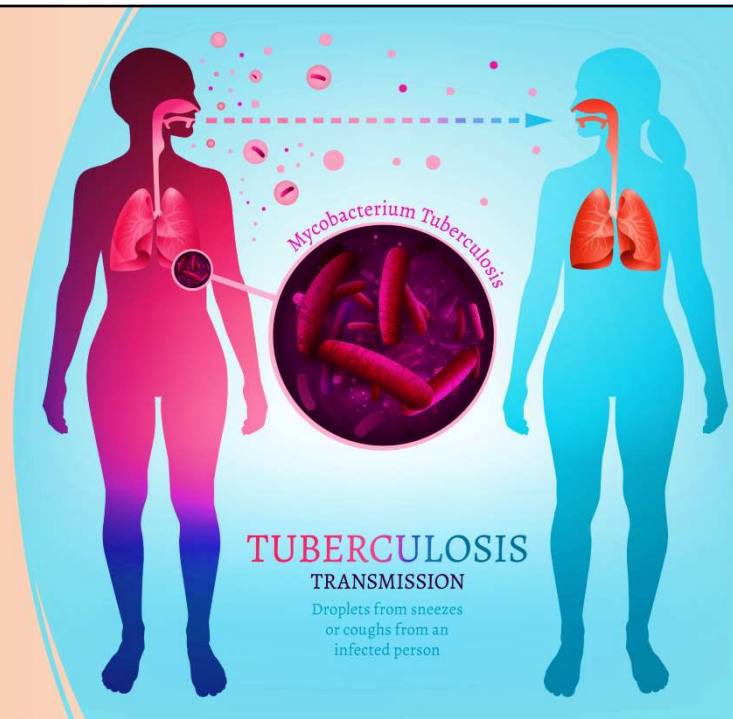
- TB is an airborne disease caused by the bacterium *Mycobacterium tuberculosis* (*M. tuberculosis*)
- Discovered March 24, 1882 by Dr. Robert Koch as a bacterial disease that mainly affects the lungs
- Although TB most commonly affects the lungs it can also affect: lymph nodes, pleura, bone and joints, urogenital tract, and meninges, this is known as extrapulmonary TB.

4

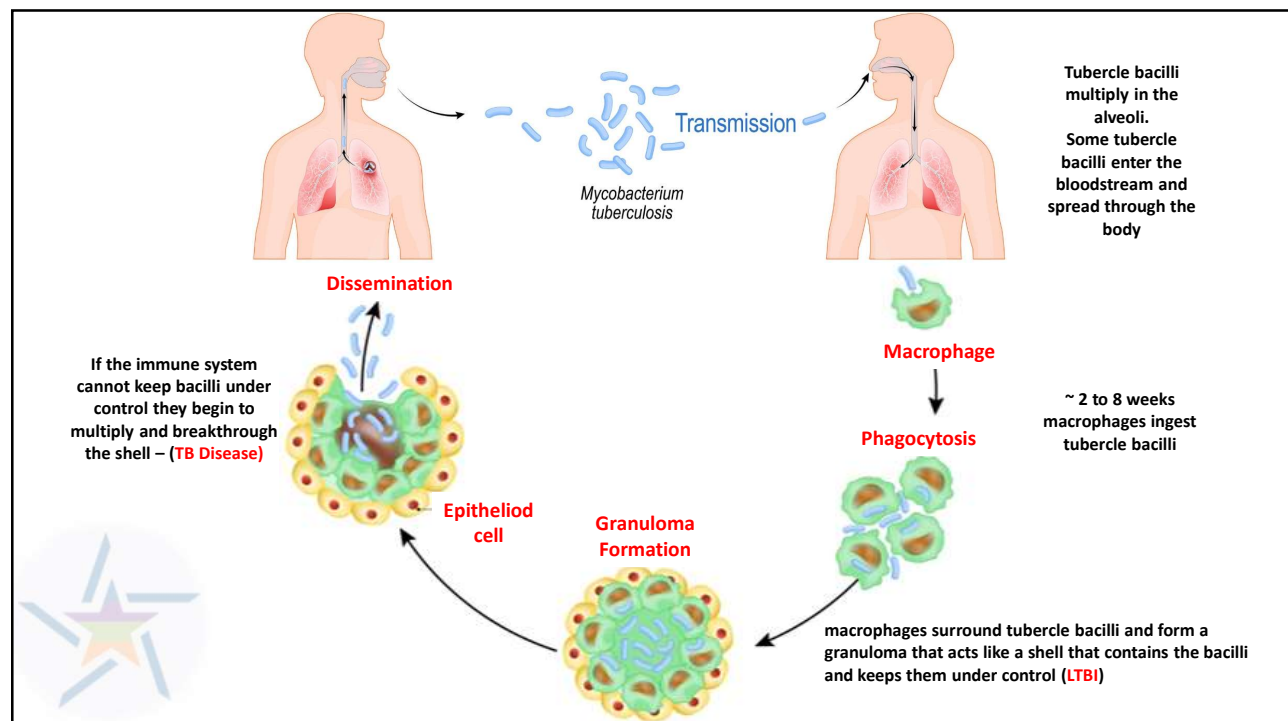
# Transmission

TB spreads through the air from one person to another when a person with pulmonary or laryngeal TB disease:

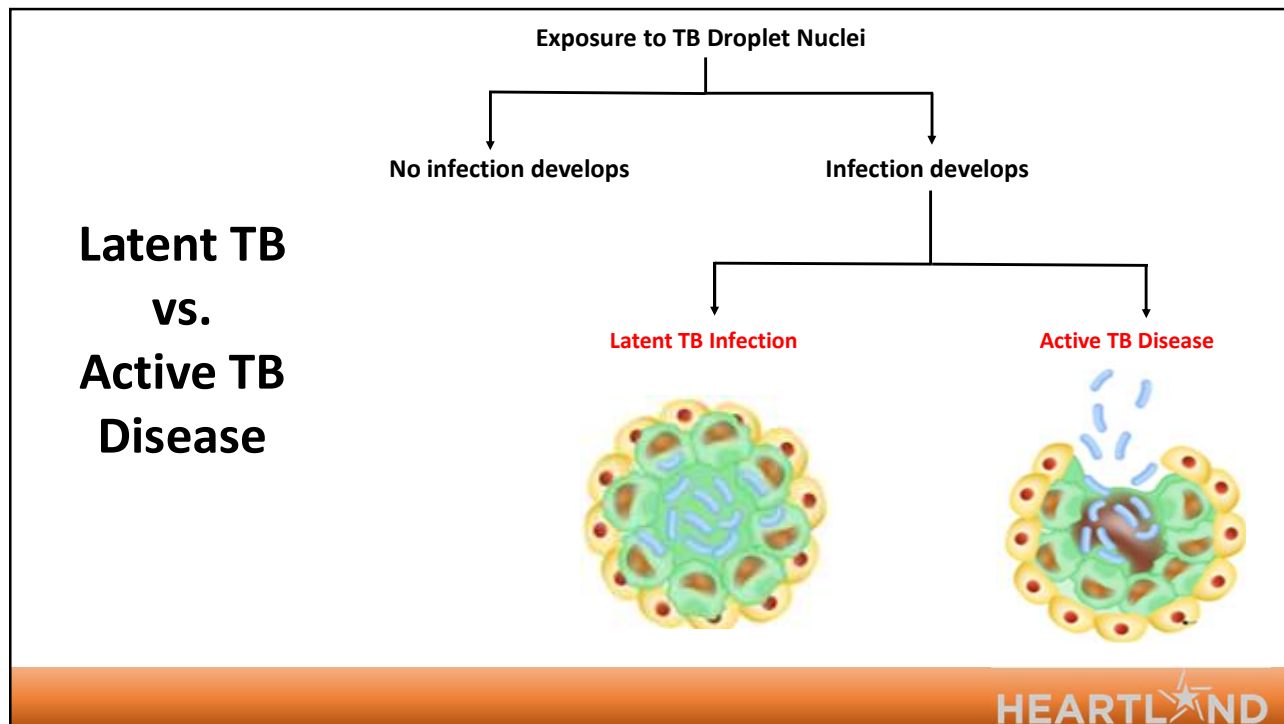
- Coughs
- Speaks
- Sings
- Sneezes



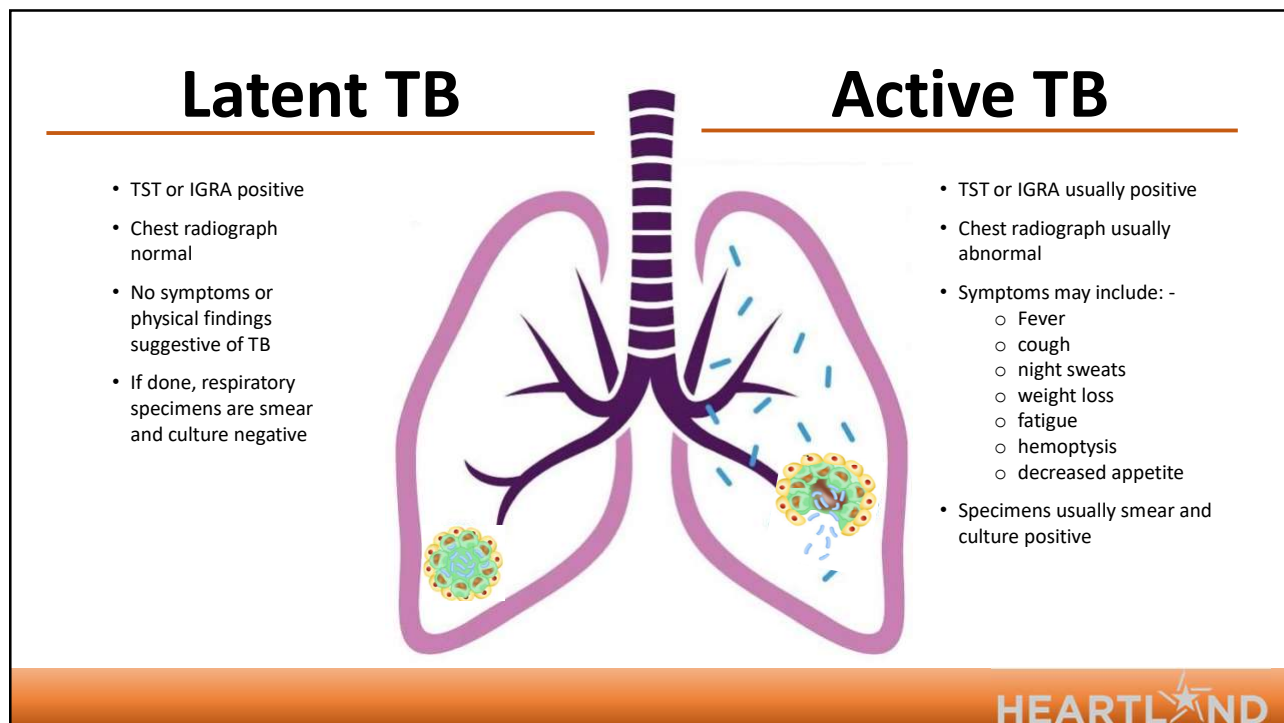
5



6



7



8

## Who is at risk of TB exposure?



Close **contacts** to persons with infectious TB



Residents and employees of high-risk **congregate** settings



People with health problems that make it hard to fight TB disease



**Recent immigrants** from TB-endemic regions of the world (within 5 years of arrival to the U.S.)

HEARTLAND

9

## Individuals at Increased Risk for **Progression** to TB Disease

Persons with HIV



Underweight or malnourished persons

Those with a history of prior, untreated TB or fibrotic lesions on chest radiograph



Substance users

Children 5 years old with a positive TST



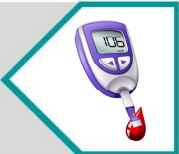

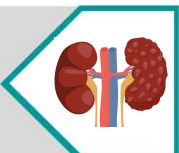



Those receiving TNF alpha antagonist for treatment of rheumatoid arthritis or Crohn's disease.

10



## Medical Conditions that Increase the Risk for Progression to TB Disease

Silicosis			Solid organ transplantation
Diabetes Mellitus			Cancer of the head or neck
Chronic renal failure or on hemodialysis			Gastrectomy or jejunal bypass

11

## TB Classification System



0

No TB exposure-  
**Not** infected

- No history of TB exposure and no evidence of *M. tuberculosis* infection or disease
- Negative reaction to TST or IGRA

1

TB exposure-  
No evidence of infection

- History of exposure to *M. tuberculosis*
- Negative reaction to TST or IGRA (test given at least 8 to 10 weeks after exposure)

2

TB infection-  
No TB disease

- Positive reaction to TST or IGRA
- Negative bacteriological studies (smear and cultures)
- No clinical or radiographic evidence of active TB disease

3

TB disease  
clinically active

- Positive culture for *M. tuberculosis* **OR**
- Positive reaction to TST or IGRA, plus clinical bacteriological, or radiographic evidence of current active TB disease

4

Previous TB disease  
(**not**) clinically active

- May have past medical history of TB disease
- Abnormal but stable radiographic findings
- Positive reaction to the TST or IGRA
- Negative bacteriological studies (smear and cultures)
- No clinical or radiographic evidence of current active TB disease

5

TB disease  
suspected

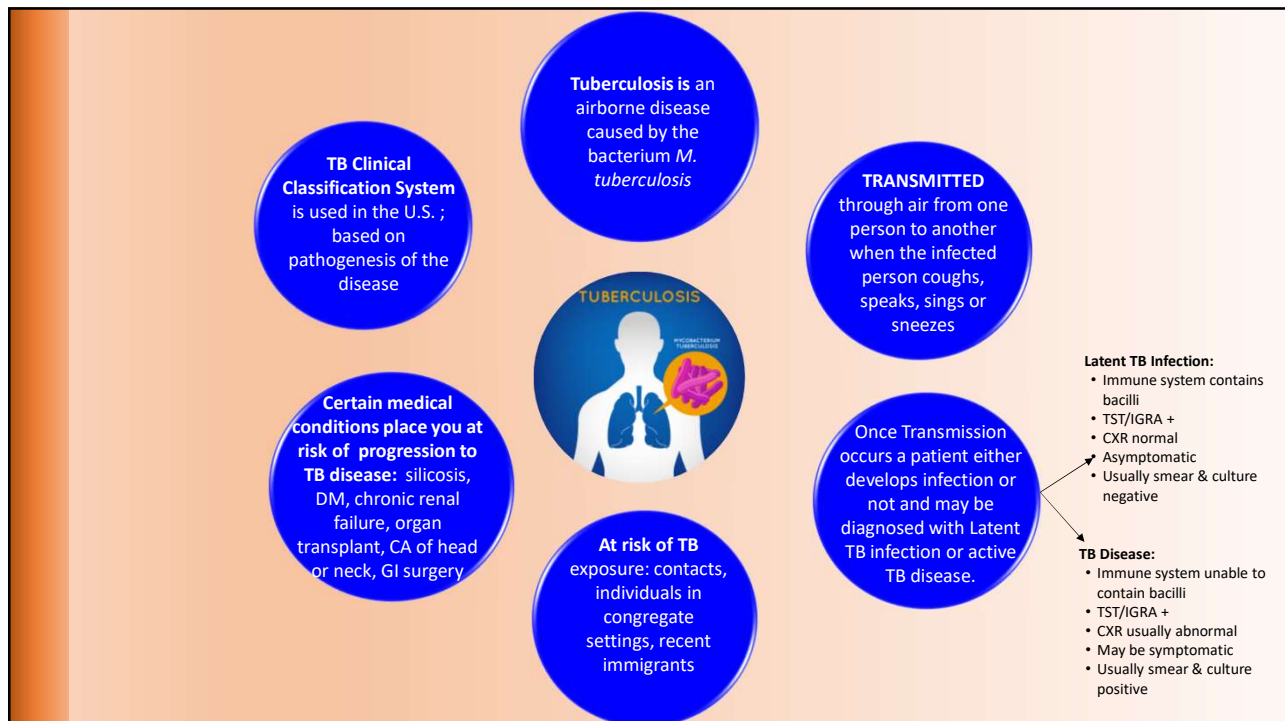
- Signs and symptoms of active TB disease, but medical evaluation **not** complete

12





13



14

## References

- David M. Lewinsohn,<sup>1,a</sup> Michael K. Leonard,<sup>2,a</sup> Philip A. LoBue,<sup>3,a</sup> David L. Cohn,<sup>4</sup> Charles L. Daley,<sup>5</sup> Ed Desmond,<sup>6</sup> Joseph Keane,<sup>7</sup> Deborah A. Lewinsohn,<sup>1</sup> Ann M. Loeffler,<sup>8</sup> Gerald H. Mazurek,<sup>3</sup> Richard J. O'Brien,<sup>9</sup> Madhukar Pai,<sup>10</sup> Luca Richeldi,<sup>11</sup> Max Salfinger,<sup>12</sup> Thomas M. Shinnick,<sup>3</sup> Timothy R. Sterling,<sup>13</sup> David M. Warshauer,<sup>14</sup> and Gail L. Woods<sup>15</sup>.  
*Official American Thoracic Society/Infectious Diseases Society of America/Centers for Disease Control and Prevention Clinical Practice Guidelines: Diagnosis of Tuberculosis in Adults and Children*
- <https://www.cdc.gov/tb/publications/guidelines/default.htm>
- [Diagnostic Standards / Classification of TB in Adults and Childrenexternal icon](#)  
Am J Respir Crit Care Med 2000; 161

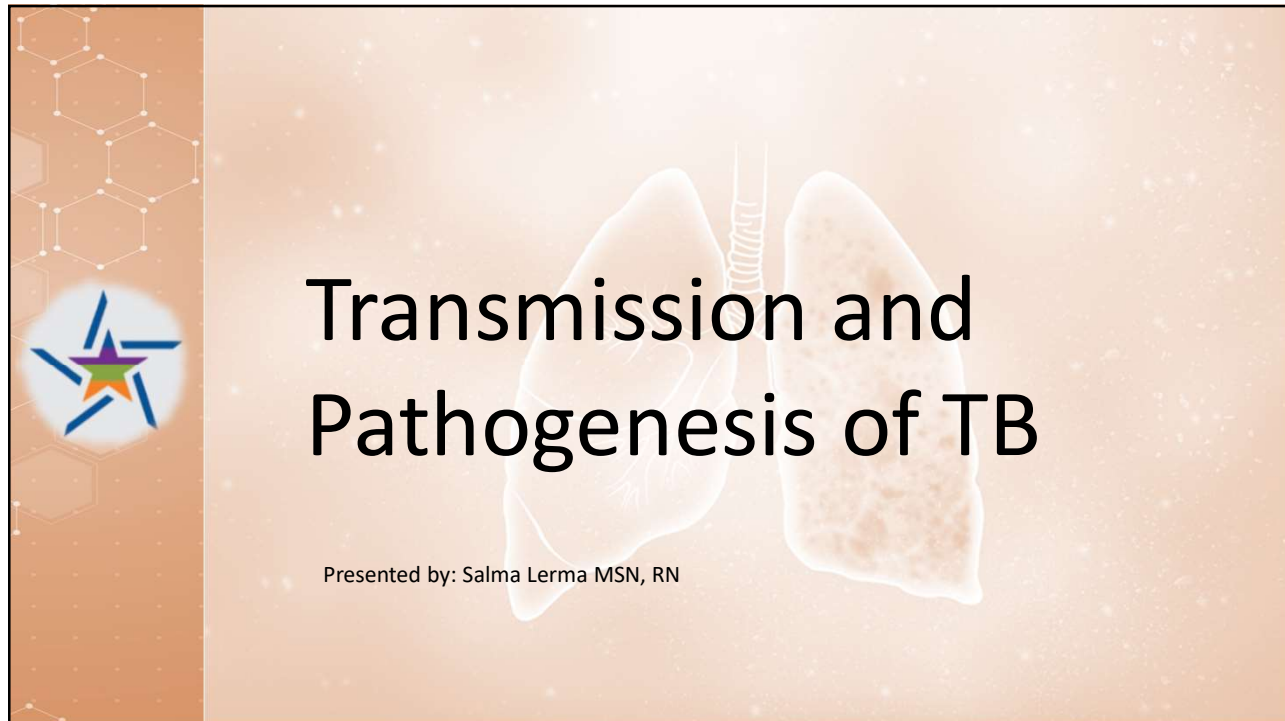
15



THANK YOU

*Acknowledgement to Marybel Monreal, RN*

16



1

***Salma Lerma MSN, RN*** has the following disclosures to make:

---

- No conflict of interests
- No relevant financial relationships with any commercial companies pertaining to this educational activity

HEARTLAND

2



## Objectives

- ✓ What is TB?
- ✓ How is TB transmitted?
- ✓ Latent TB vs. TB Disease
- ✓ Risk factors for TB
- ✓ TB Classification System

3

## What is Tuberculosis



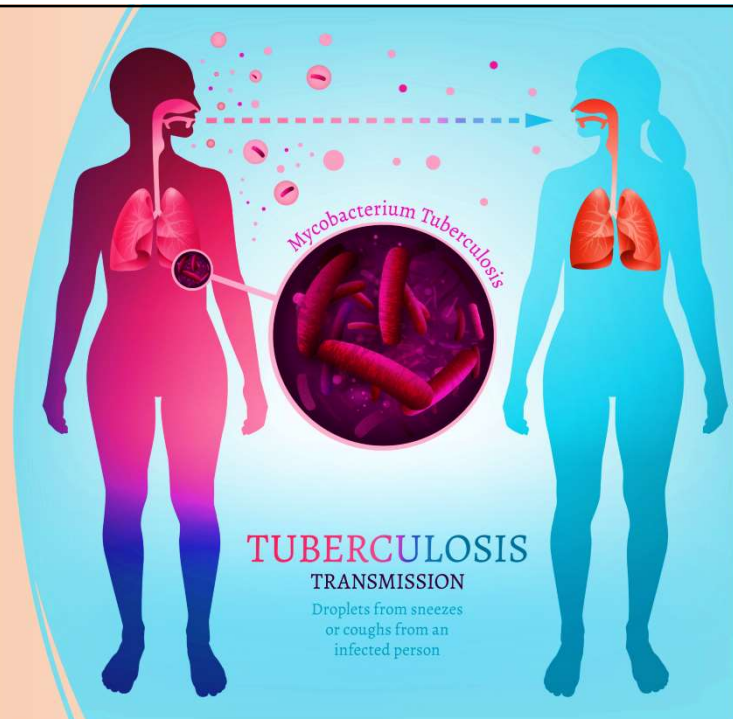
- TB is an airborne disease caused by the bacterium *Mycobacterium tuberculosis* (*M. tuberculosis*)
- Discovered March 24, 1882 by Dr. Robert Koch as a bacterial disease that mainly affects the lungs
- Although TB most commonly affects the lungs it can also affect: lymph nodes, pleura, bone and joints, urogenital tract, and meninges, this is known as extrapulmonary TB.

4

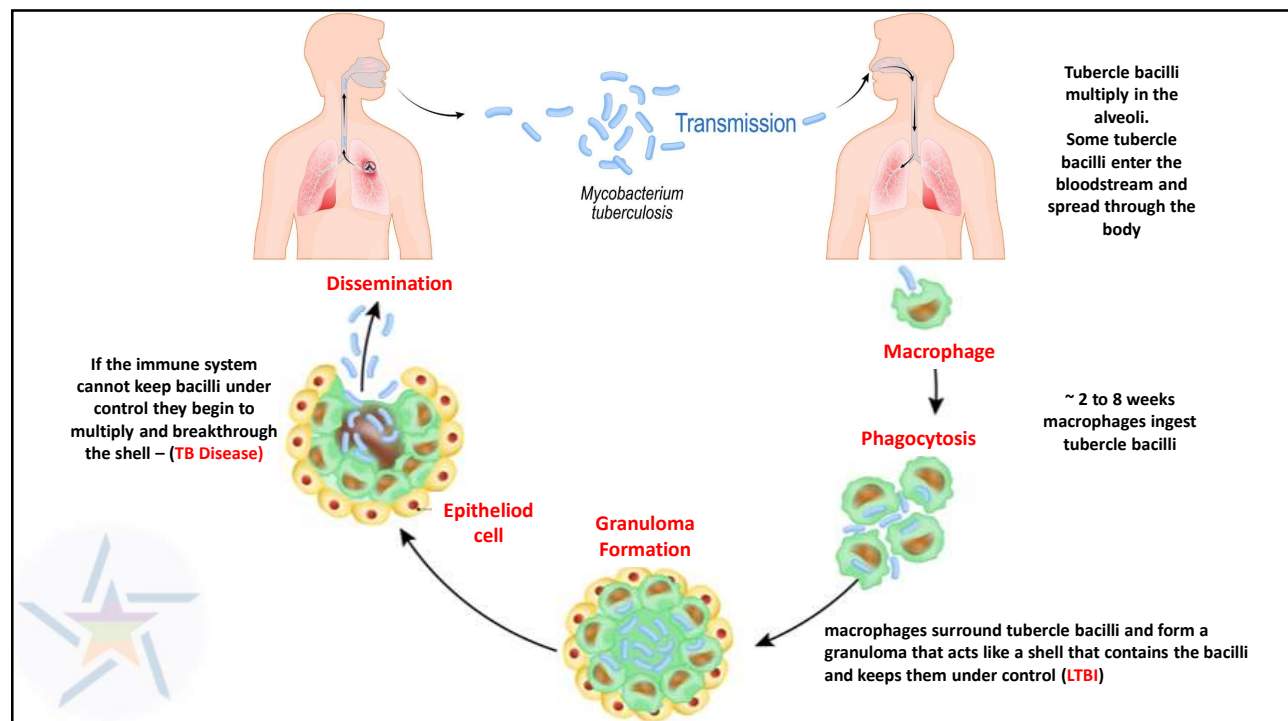
# Transmission

TB spreads through the air from one person to another when a person with pulmonary or laryngeal TB disease:

- Coughs
- Speaks
- Sings
- Sneezes

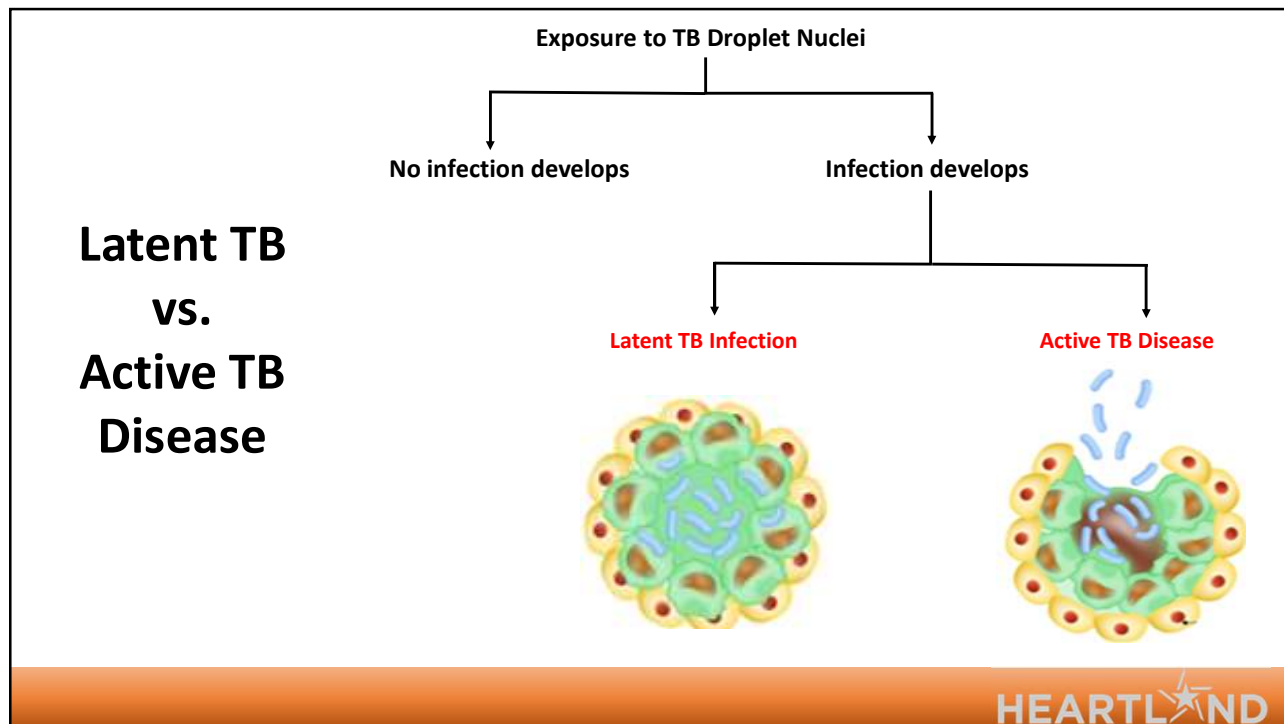


5



6







## Who is at risk of TB exposure?



Close **contacts** to persons with infectious TB



Residents and employees of high-risk **congregate** settings



People with health problems that make it hard to fight TB disease



**Recent immigrants** from TB-endemic regions of the world (within 5 years of arrival to the U.S.)

HEARTLAND

9

## Individuals at Increased Risk for **Progression** to TB Disease

Persons with HIV



Underweight or malnourished persons

Those with a history of prior, untreated TB or fibrotic lesions on chest radiograph



Substance users





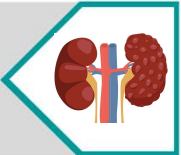

Children 5 years old with a positive TST



Those receiving TNF alpha antagonist for treatment of rheumatoid arthritis or Crohn's disease.

10

## Medical Conditions that Increase the Risk for Progression to TB Disease

Silicosis			Solid organ transplantation
Diabetes Mellitus			Cancer of the head or neck
Chronic renal failure or on hemodialysis			Gastrectomy or jejunal bypass

11

## TB Classification System



0

No TB exposure-  
**Not** infected

- No history of TB exposure and no evidence of *M. tuberculosis* infection or disease
- Negative reaction to TST or IGRA

1

TB exposure-  
No evidence of infection

- History of exposure to *M. tuberculosis*
- Negative reaction to TST or IGRA (test given at least 8 to 10 weeks after exposure)

2

TB infection-  
No TB disease

- Positive reaction to TST or IGRA
- Negative bacteriological studies (smear and cultures)
- No clinical or radiographic evidence of active TB disease

3

TB disease  
clinically active

- Positive culture for *M. tuberculosis* **OR**
- Positive reaction to TST or IGRA, plus clinical bacteriological, or radiographic evidence of current active TB disease

4

Previous TB disease  
(**not**) clinically active

- May have past medical history of TB disease
- Abnormal but stable radiographic findings
- Positive reaction to the TST or IGRA
- Negative bacteriological studies (smear and cultures)
- No clinical or radiographic evidence of current active TB disease

5

TB disease  
suspected

- Signs and symptoms of active TB disease, but medical evaluation **not** complete

12



13



14

## References

- David M. Lewinsohn,<sup>1,a</sup> Michael K. Leonard,<sup>2,a</sup> Philip A. LoBue,<sup>3,a</sup> David L. Cohn,<sup>4</sup> Charles L. Daley,<sup>5</sup> Ed Desmond,<sup>6</sup> Joseph Keane,<sup>7</sup> Deborah A. Lewinsohn,<sup>1</sup> Ann M. Loeffler,<sup>8</sup> Gerald H. Mazurek,<sup>3</sup> Richard J. O'Brien,<sup>9</sup> Madhukar Pai,<sup>10</sup> Luca Richeldi,<sup>11</sup> Max Salfinger,<sup>12</sup> Thomas M. Shinnick,<sup>3</sup> Timothy R. Sterling,<sup>13</sup> David M. Warshauer,<sup>14</sup> and Gail L. Woods<sup>15</sup>.  
*Official American Thoracic Society/Infectious Diseases Society of America/Centers for Disease Control and Prevention Clinical Practice Guidelines: Diagnosis of Tuberculosis in Adults and Children*
- <https://www.cdc.gov/tb/publications/guidelines/default.htm>
- [Diagnostic Standards / Classification of TB in Adults and Childrenexternal icon](#)  
Am J Respir Crit Care Med 2000; 161

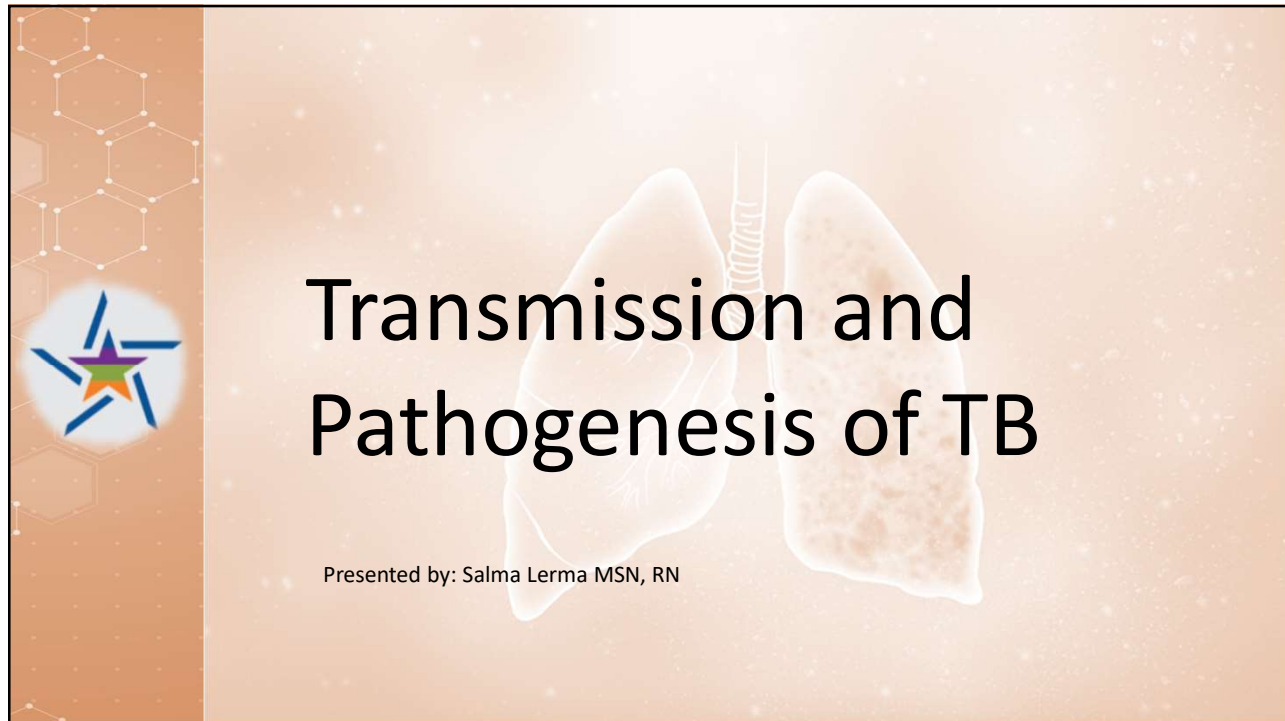
15



THANK YOU

Acknowledgement to Marybel Monreal, RN

16



1

***Salma Lerma MSN, RN*** has the following disclosures to make:

---

- No conflict of interests
- No relevant financial relationships with any commercial companies pertaining to this educational activity

HEARTLAND

2



## Objectives

- ✓ What is TB?
- ✓ How is TB transmitted?
- ✓ Latent TB vs. TB Disease
- ✓ Risk factors for TB
- ✓ TB Classification System

3

## What is Tuberculosis



- TB is an airborne disease caused by the bacterium *Mycobacterium tuberculosis* (*M.tuberculosis*)
- Discovered March 24, 1882 by Dr. Robert Koch as a bacterial disease that mainly affects the lungs
- Although TB most commonly affects the lungs it can also affect: lymph nodes, pleura, bone and joints, urogenital tract, and meninges, this is known as extrapulmonary TB.

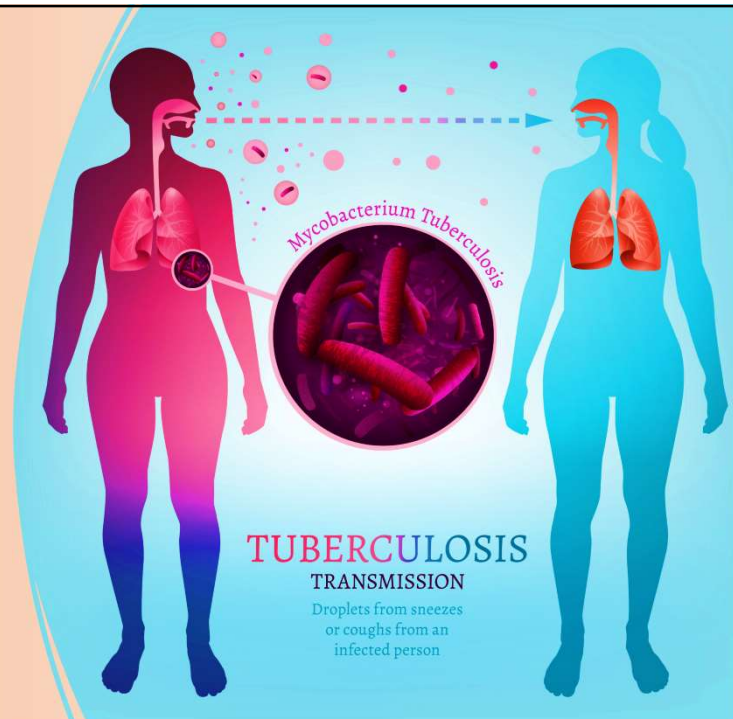
4



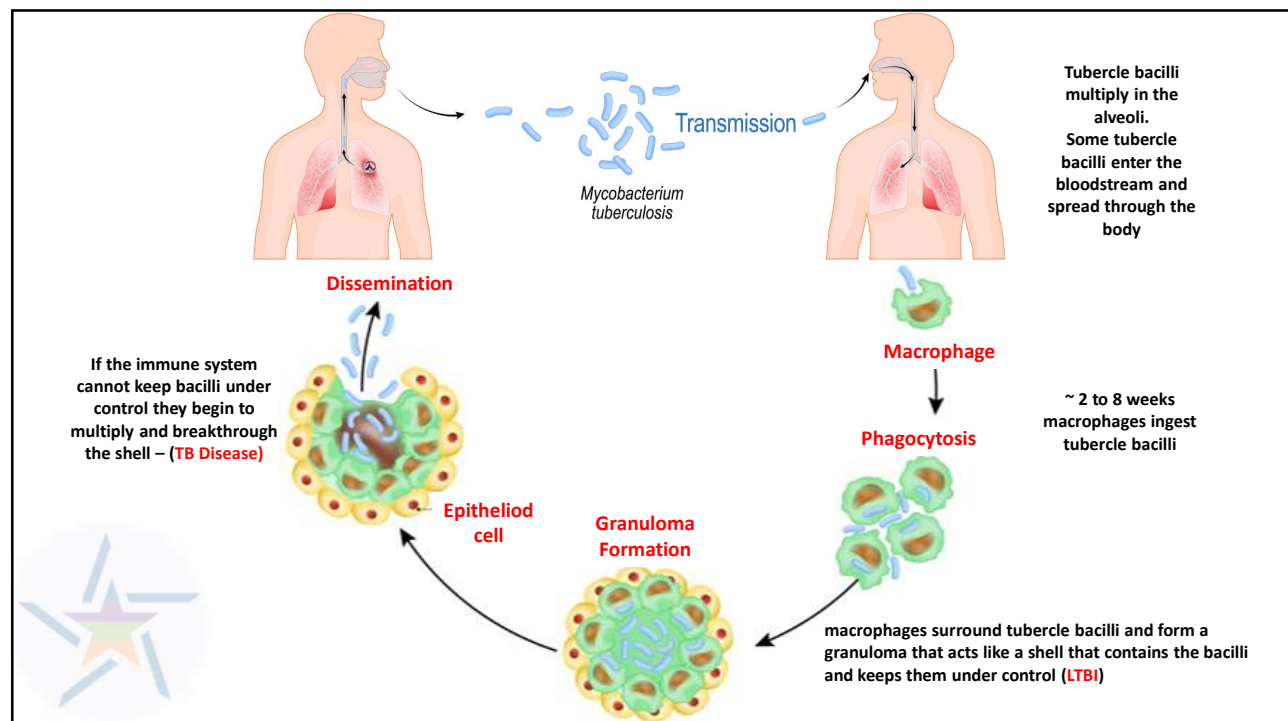
# Transmission

TB spreads through the air from one person to another when a person with pulmonary or laryngeal TB disease:

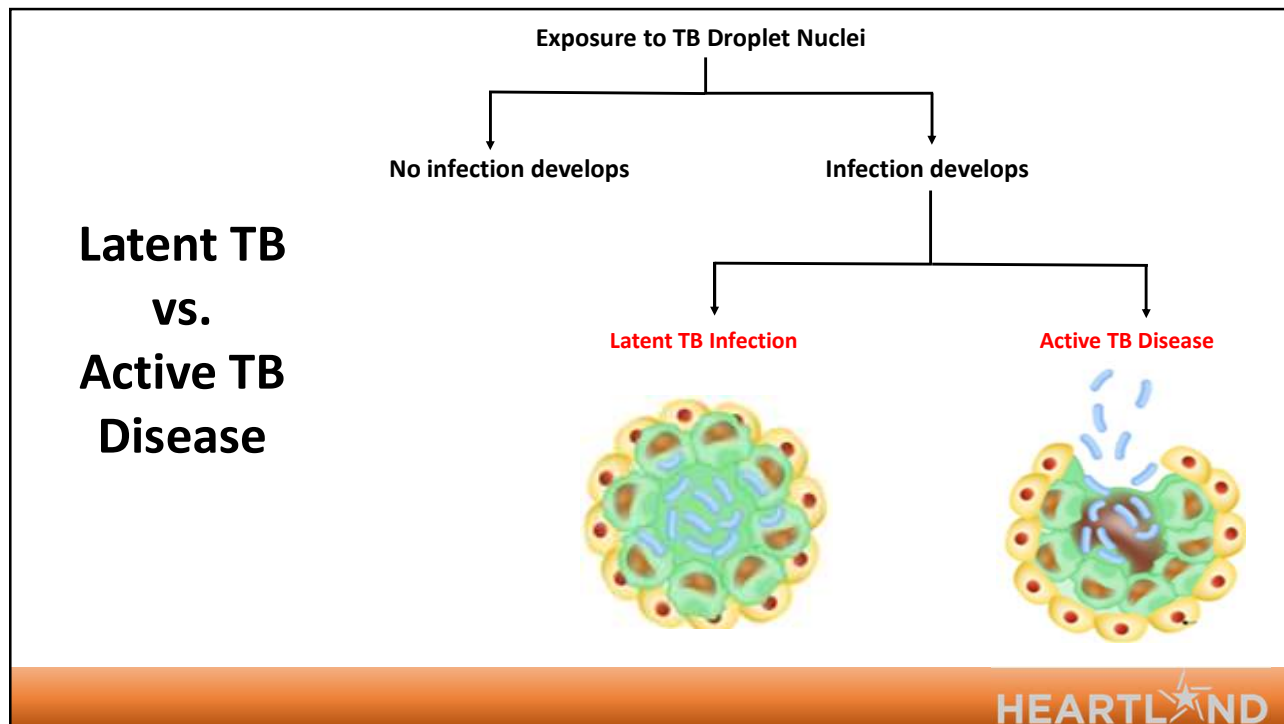
- Coughs
- Speaks
- Sings
- Sneezes



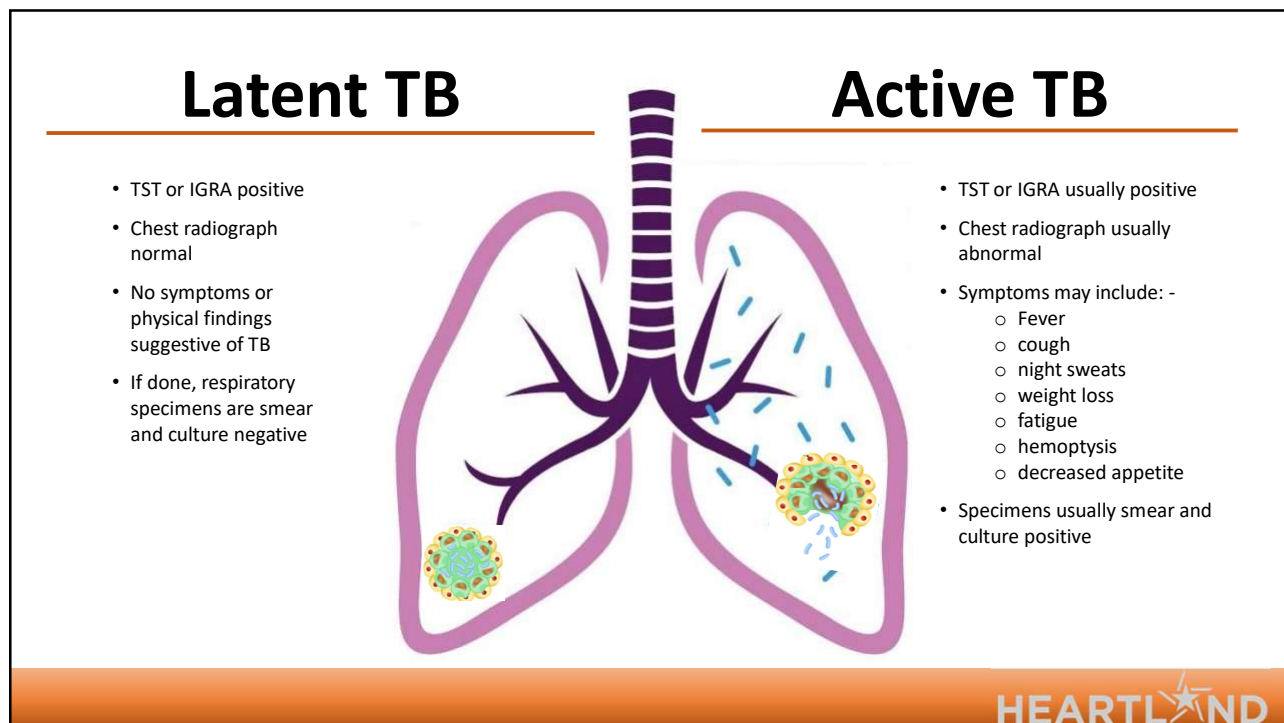
5



6



7



8

## Who is at risk of TB exposure?



Close **contacts** to persons with infectious TB



Residents and employees of high-risk **congregate** settings



People with health problems that make it hard to fight TB disease



**Recent immigrants** from TB-endemic regions of the world (within 5 years of arrival to the U.S.)

HEARTLAND

9

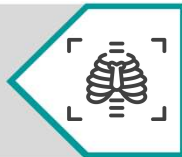
## Individuals at Increased Risk for **Progression** to TB Disease

Persons with HIV



Underweight or malnourished persons

Those with a history of prior, untreated TB or fibrotic lesions on chest radiograph



Substance users





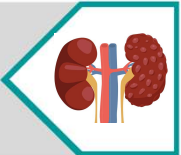

Children 5 years old with a positive TST



Those receiving TNF alpha antagonist for treatment of rheumatoid arthritis or Crohn's disease.

10

## Medical Conditions that Increase the Risk for Progression to TB Disease

Silicosis			Solid organ transplantation
Diabetes Mellitus			Cancer of the head or neck
Chronic renal failure or on hemodialysis			Gastrectomy or jejunal bypass

11

## TB Classification System



0

No TB exposure-  
**Not** infected

- No history of TB exposure and no evidence of *M. tuberculosis* infection or disease
- Negative reaction to TST or IGRA

1

TB exposure-  
No evidence of infection

- History of exposure to *M. tuberculosis*
- Negative reaction to TST or IGRA (test given at least 8 to 10 weeks after exposure)

2

TB infection-  
No TB disease

- Positive reaction to TST or IGRA
- Negative bacteriological studies (smear and cultures)
- No clinical or radiographic evidence of active TB disease

3

TB disease  
clinically active

- Positive culture for *M. tuberculosis* **OR**
- Positive reaction to TST or IGRA, plus clinical bacteriological, or radiographic evidence of current active TB disease

4

Previous TB disease  
**(not)** clinically active

- May have past medical history of TB disease
- Abnormal but stable radiographic findings
- Positive reaction to the TST or IGRA
- Negative bacteriological studies (smear and cultures)
- No clinical or radiographic evidence of current active TB disease

5

TB disease  
suspected

- Signs and symptoms of active TB disease, but medical evaluation **not** complete

12



13



14

## References

- David M. Lewinsohn,<sup>1,a</sup> Michael K. Leonard,<sup>2,a</sup> Philip A. LoBue,<sup>3,a</sup> David L. Cohn,<sup>4</sup> Charles L. Daley,<sup>5</sup> Ed Desmond,<sup>6</sup> Joseph Keane,<sup>7</sup> Deborah A. Lewinsohn,<sup>1</sup> Ann M. Loeffler,<sup>8</sup> Gerald H. Mazurek,<sup>3</sup> Richard J. O'Brien,<sup>9</sup> Madhukar Pai,<sup>10</sup> Luca Richeldi,<sup>11</sup> Max Salfinger,<sup>12</sup> Thomas M. Shinnick,<sup>3</sup> Timothy R. Sterling,<sup>13</sup> David M. Warshauer,<sup>14</sup> and Gail L. Woods<sup>15</sup>.  
*Official American Thoracic Society/Infectious Diseases Society of America/Centers for Disease Control and Prevention Clinical Practice Guidelines: Diagnosis of Tuberculosis in Adults and Children*
- <https://www.cdc.gov/tb/publications/guidelines/default.htm>
- [Diagnostic Standards / Classification of TB in Adults and Childrenexternal icon](#)  
Am J Respir Crit Care Med 2000; 161

**THANK YOU**

*Acknowledgement to Marybel Monreal, RN*