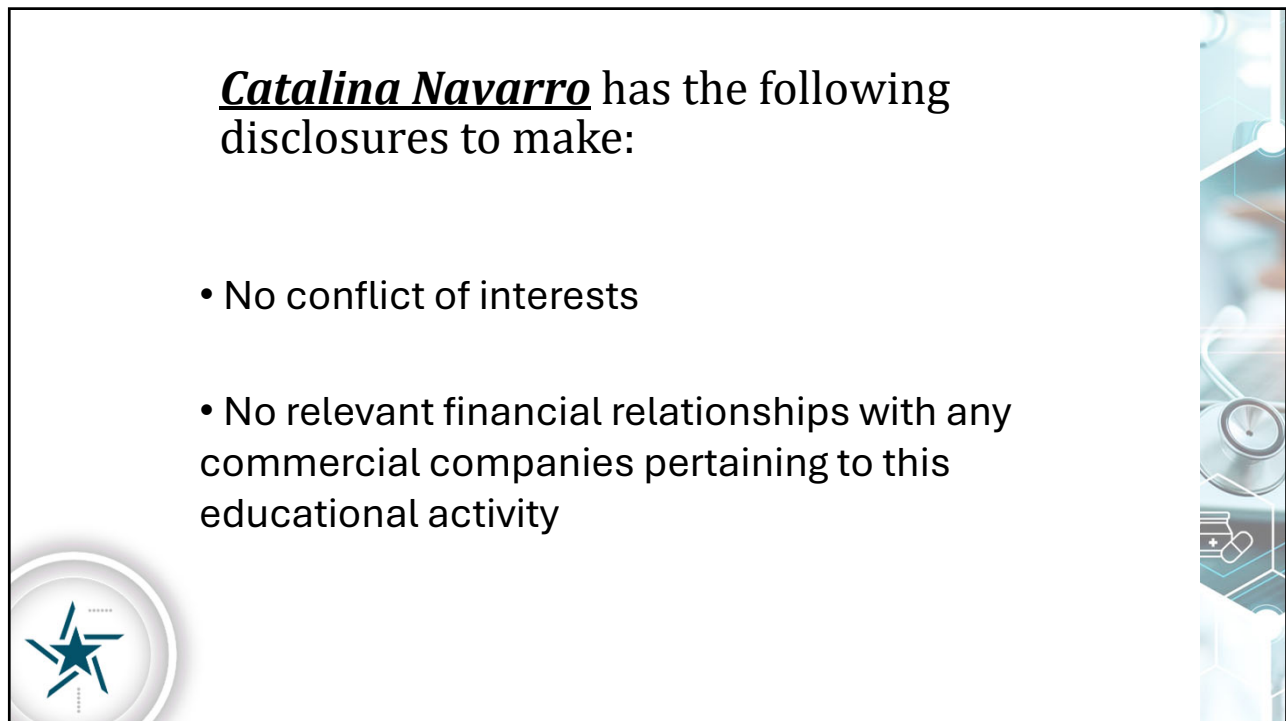


The slide features a light blue background with a medical-themed collage on the right side, including a stethoscope, a pill bottle, and a hand holding a stethoscope. On the left, there is a circular graphic containing a stylized star with radiating lines. The main title is centered in a white rounded rectangle.

## Texas-Mexico Binational Programs Overview

***TB Nurse Expert Meeting***  
***San Antonio, Texas***  
***November 6-7, 2025***

Catalina Navarro, BSN RN



The slide features a light blue background with a medical-themed collage on the right side, including a stethoscope, a pill bottle, and a hand holding a stethoscope. On the left, there is a circular graphic containing a stylized star with radiating lines. The main text is centered in a white rounded rectangle.

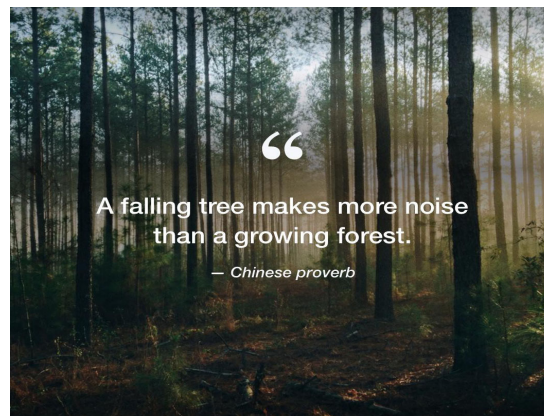
**Catalina Navarro** has the following disclosures to make:

- No conflict of interests
- No relevant financial relationships with any commercial companies pertaining to this educational activity

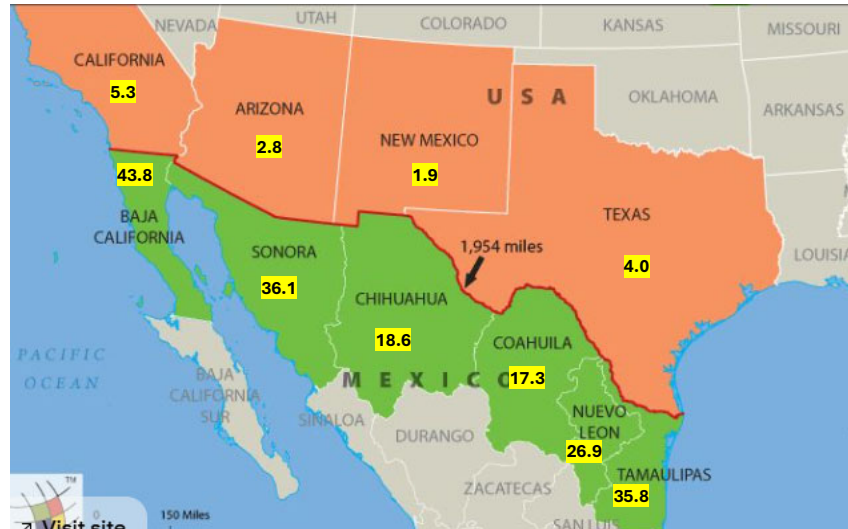
## US-Mexico Border in the News



## Beyond the Headlines: Collaboration Without Borders



## TB Rate per 100,000 population U.S. border states (2024) and Mexican Border States (2023)



Catalogo nacional de Indicadores 2024. SNIEG. <https://www.snieg.mx/cni/escenario.aspx?idOrden=1.1&ind=6300000063&gen=190&d=n>

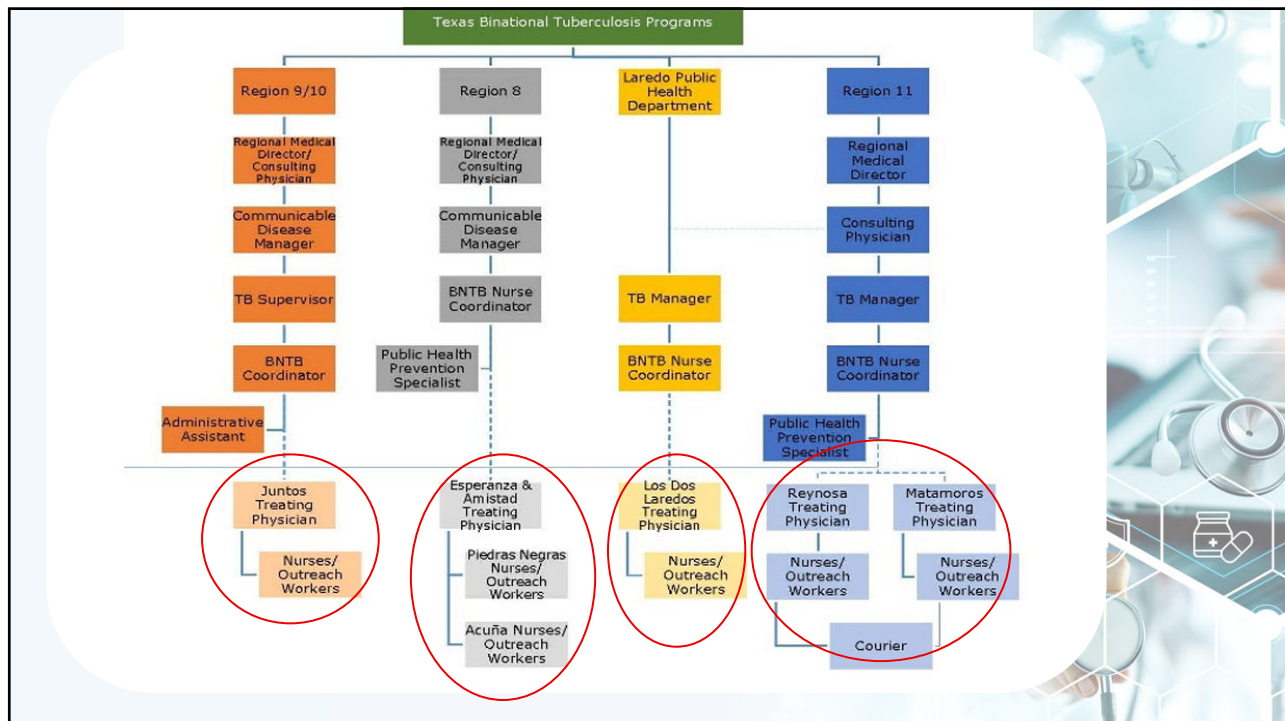
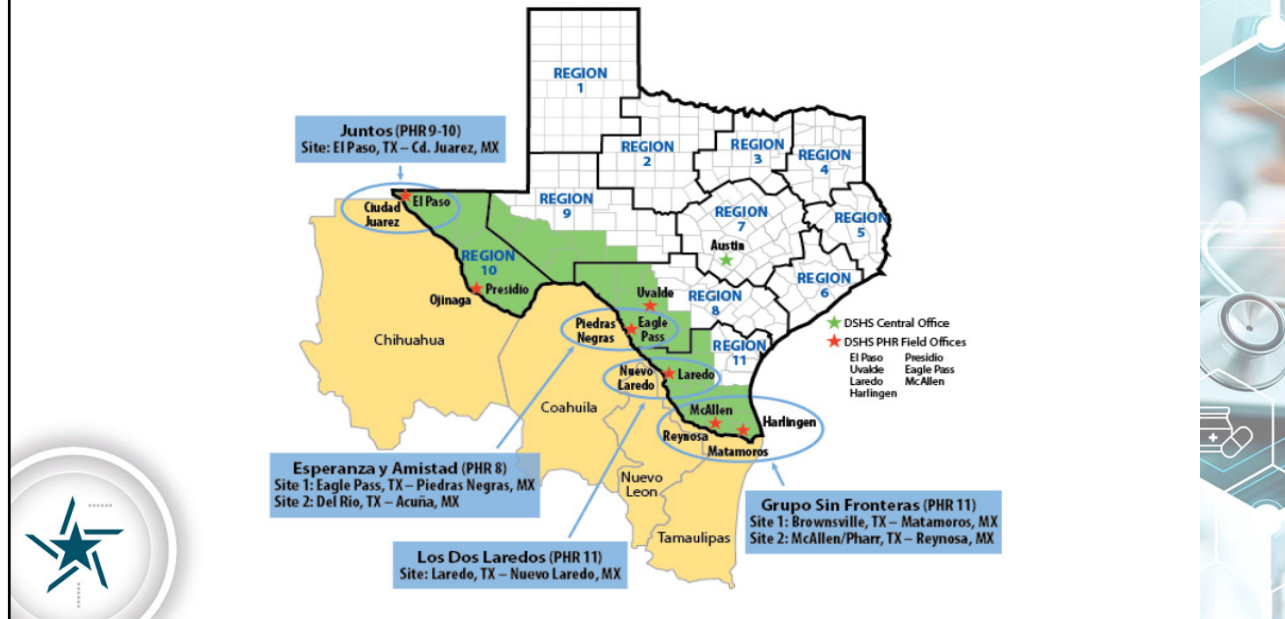
CDC Provisional Data 2024 <https://www.cdc.gov/tb-data/2024-provisional/index.html>

## Texas-Mexico Binational TB Programs

It is a formal partnership to address TB along the  
Texas-Mexico border

BNTB Program	Established	Texas Border	Mexico Border	Mexico State
Juntos	1991	El Paso	Juarez	Chihuahua
Los Dos Laredos	1993	Laredo	Nuevo Laredo	Tamaulipas
Grupos Sin Fronteras	1995	Brownsville McAllen	Matamoros Reynosa	Tamaulipas
Esperanza y Amistad	2010	Eagle Pass Del Rio	Piedras Negras Acuña	Coahuila

## Texas-Mexico Binational Projects





## Binational Patient Enrollment Criteria

- The client starts treatment in the U.S. but returns to live in Mexico
- The client is referred from the U.S. for treatment or follow-up in Mexico
- The client has dual residency in the U.S. and Mexico
- The client has contacts on both sides of the border, in the U.S. and Mexico
- The client lives in Mexico but has relatives in the U.S.



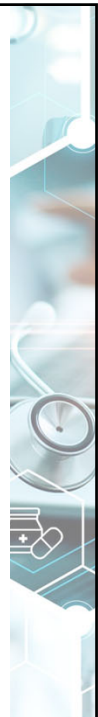
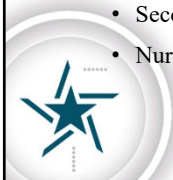
## Case Management for TB Along the Texas-Mexico Border

### **Binational Patient Identification – Mexico**

- Patients identified with TB, drug-resistant TB, serious forms, pediatric patients, or with comorbidities
- Treating physician in Mexico performs initial evaluation.
- Nurses gather clinical information, collect labs, sputum samples, and perform Chest X-rays
- Samples and images are transported across the border to the U.S.

### **Cross-Border Coordination – U.S. (Texas DSHS)**

- Lab specimens are processed and chest X-rays reviewed by Texas DSHS
- Provide expert guidance and care for TB and LTBI evaluation, treatment, and monitoring.
- Individualized treatment regimens recommended by HNTC TB medical consultants
- Second-line TB medications provided by Texas DSHS to support treatment
- Nurses and physicians at the border trained and mentored to enhance their knowledge, skills, and abilities



*Now, let's watch the recorded  
presentations prepared by  
our amazing nurse  
coordinators!*

