



Principles of Nurse Case Management: Why Are We Here?

Laura Gomez, BSN, RN

April 29, 2026

TB Nurse Case Management • April 29 – May 1, 2026 • Fort Worth, Texas



Laura Gomez, BSN, RN

Has the following disclosures to make:

- No conflict of interests
- No relevant financial relationships with any commercial companies pertaining to this activity





Principles of Nurse Case Management

Why Are We Here?

Laura Gomez, BSN, RN



Laura Gomez, BSN, RN has the following disclosures to make:

- No conflict of interests
- No relevant financial relationships with any commercial companies pertaining to this educational activity



**Why are we
here?**

**Is TB still a
problem?**



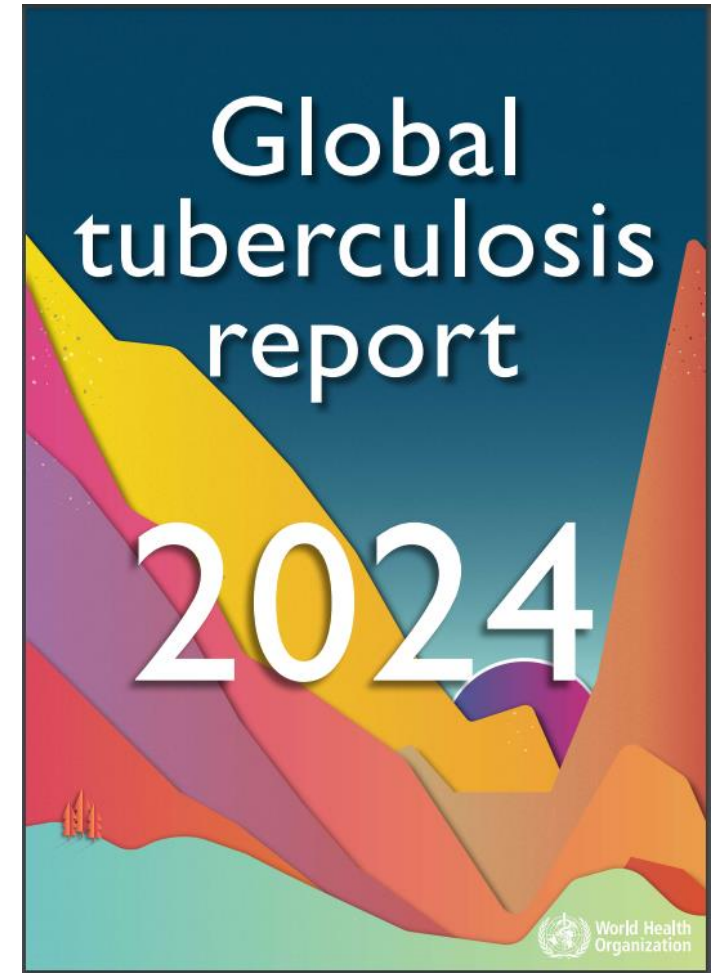
Objectives

- Epidemiology of TB Globally
- TB in the USA and in Texas
- Definition of TB Nurse case management
- Goals and elements of TB case management



TB is still a Big Problem

- Tuberculosis **is back** as the top infectious disease killer globally
- TB is the leading killer of people **with HIV**
- > **10** million people fell ill with TB disease each year
- 1.25 million people died from(TB) in 2023



TB is a Social Disease....

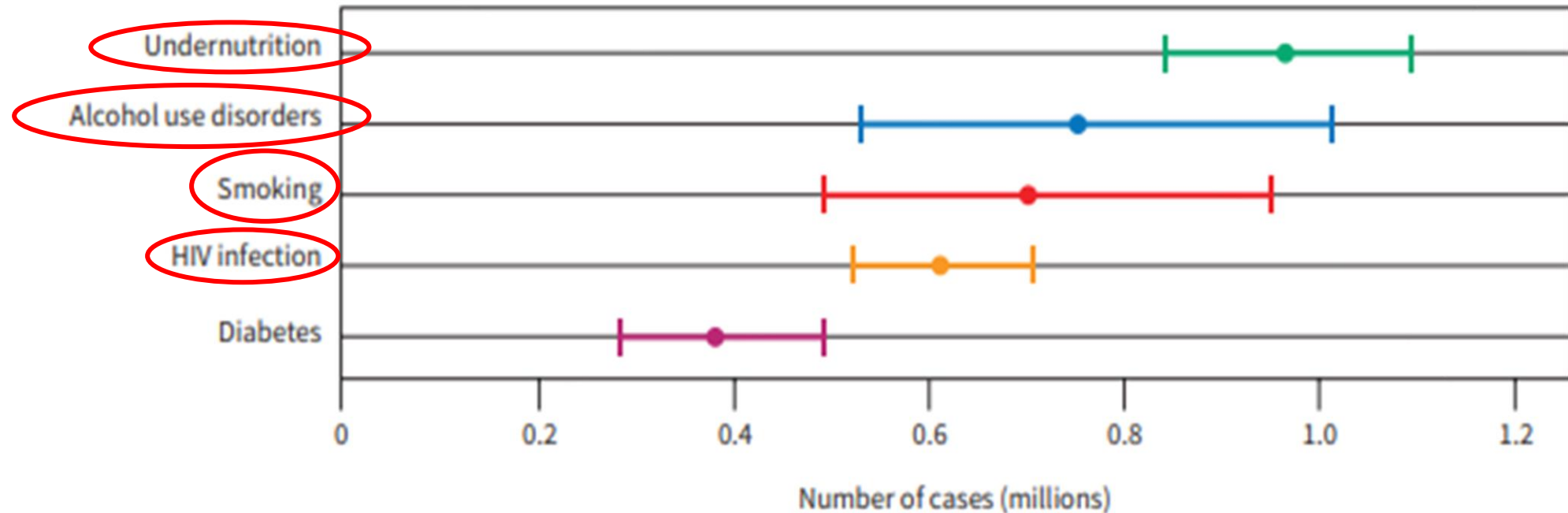


- Undernutrition
- Alcohol abuse
- Substance abuse
- Tobacco
- Diabetes and HIV

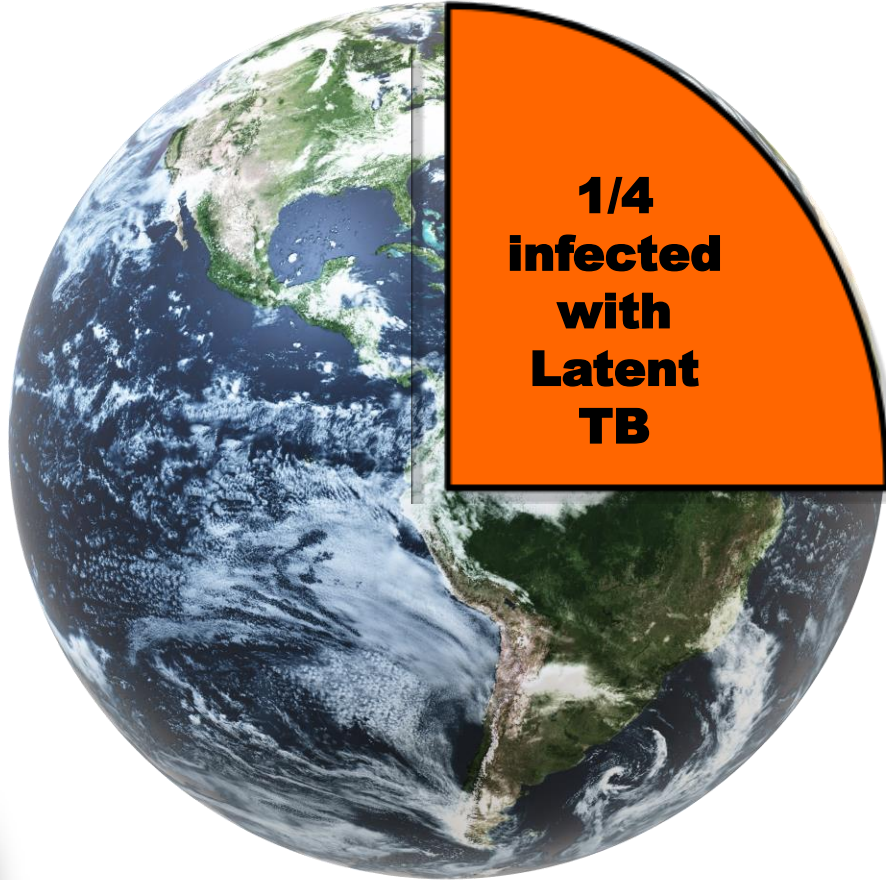


Global Risk Factors for People Having TB

Global estimates of the number of people with a new episode of TB (incident cases) attributable to five risk factors,^a 2023



How about **Latent TB** in the world? ...and Drug Resistant?



Drug-resistant tuberculosis
remains a **public health crisis**

In 2020 only about

1 IN 3 OF THOSE IN NEED
RECEIVED TREATMENT
FOR DRUG-RESISTANT TB

TB in USA



TB outbreak: Kansas health officials report 67 cases since 2024

Published 1:39 p.m. ET Jan. 27, 2025

[Saleen Martin](#)

USA TODAY



Tuberculosis outbreak in Kansas becomes largest in US since 1950s

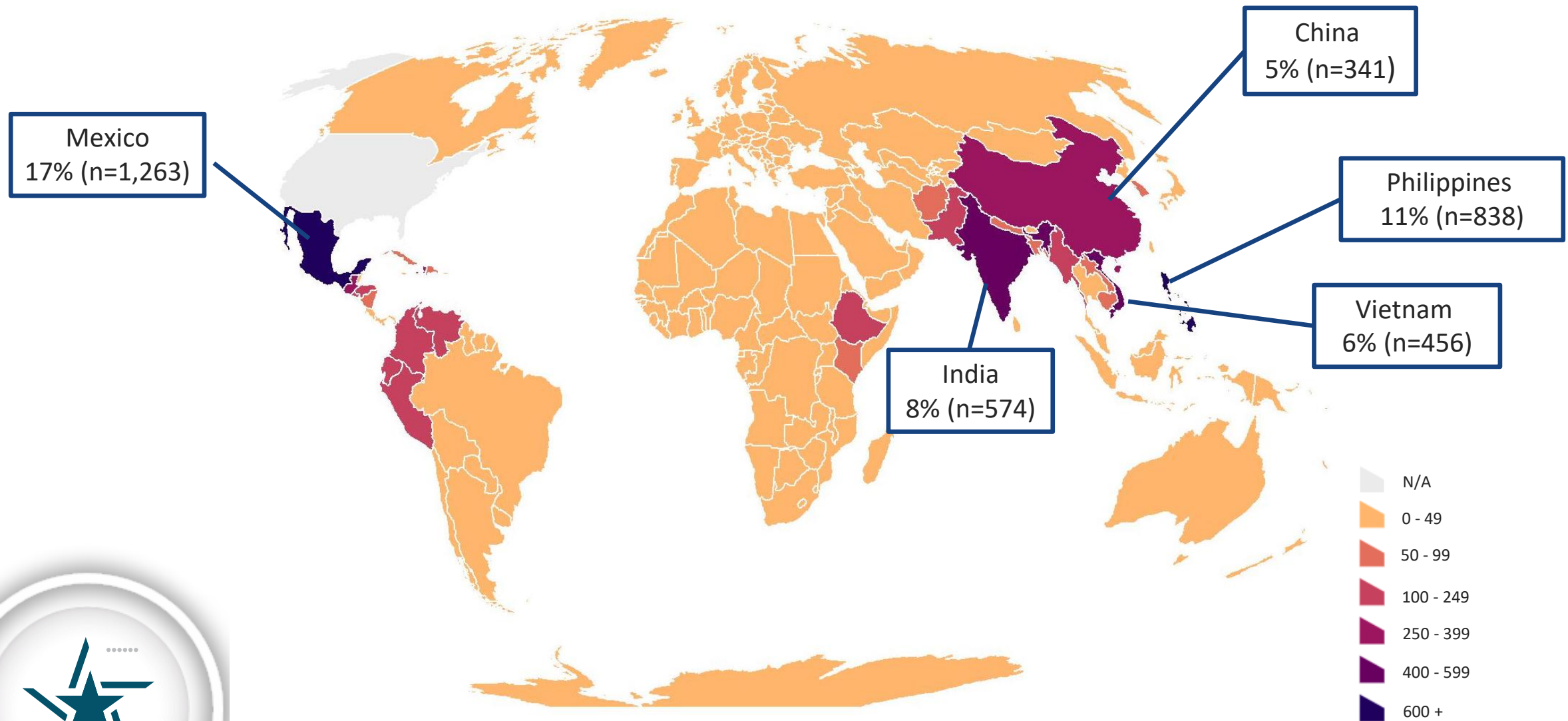
By Jacqueline Howard, CNN

4 minute read

Published 2:36 PM EST, Tue January 28, 2025

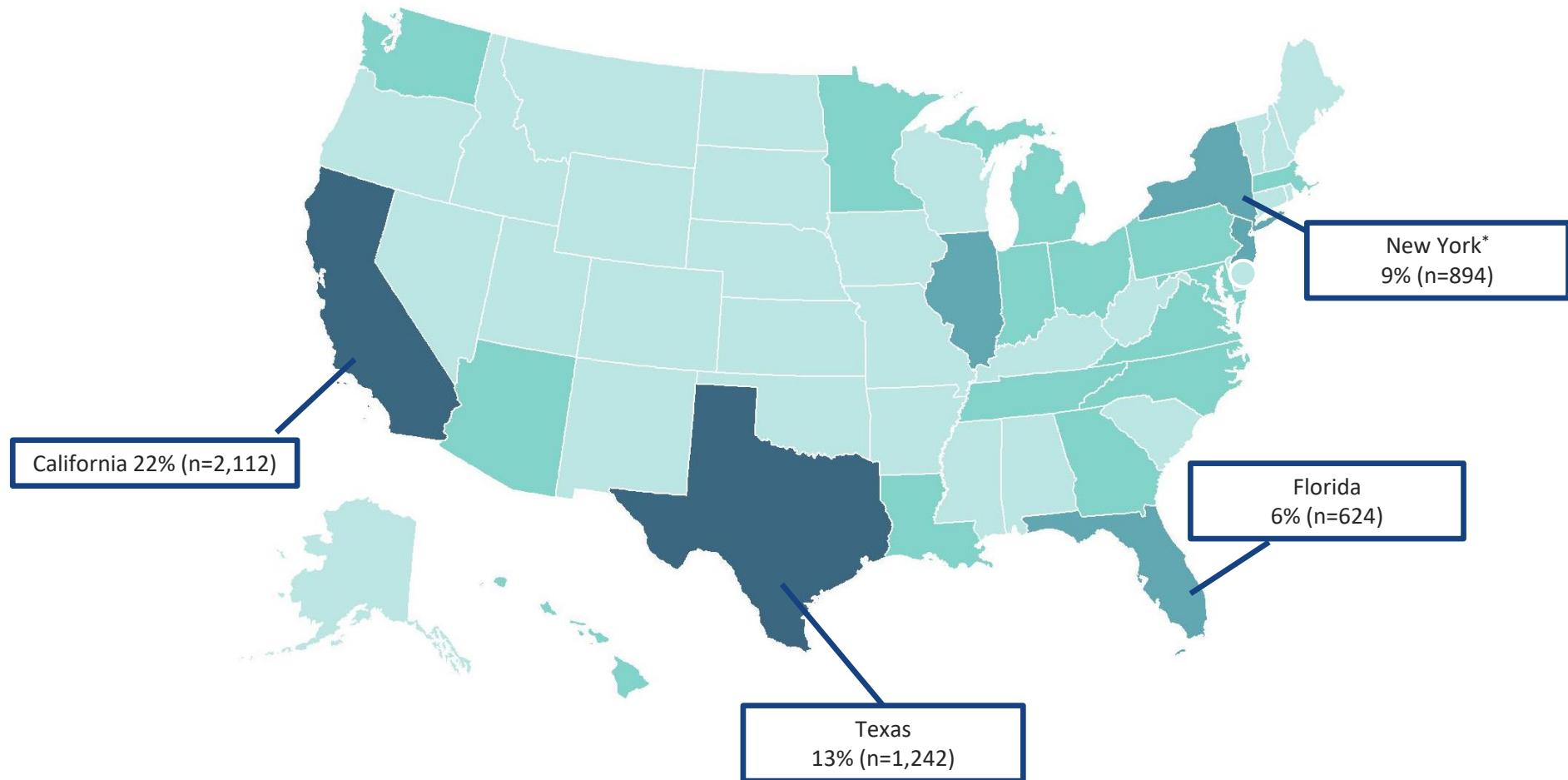


TB Cases by Countries of Birth Among Non-U.S.–Born* Persons, United States, 2023 (N=7,299)



*Persons born in the United States, certain U.S. territories, or elsewhere to at least one U.S. citizen parent are categorized as U.S.-born. All other persons are categorized as non-U.S.–born.

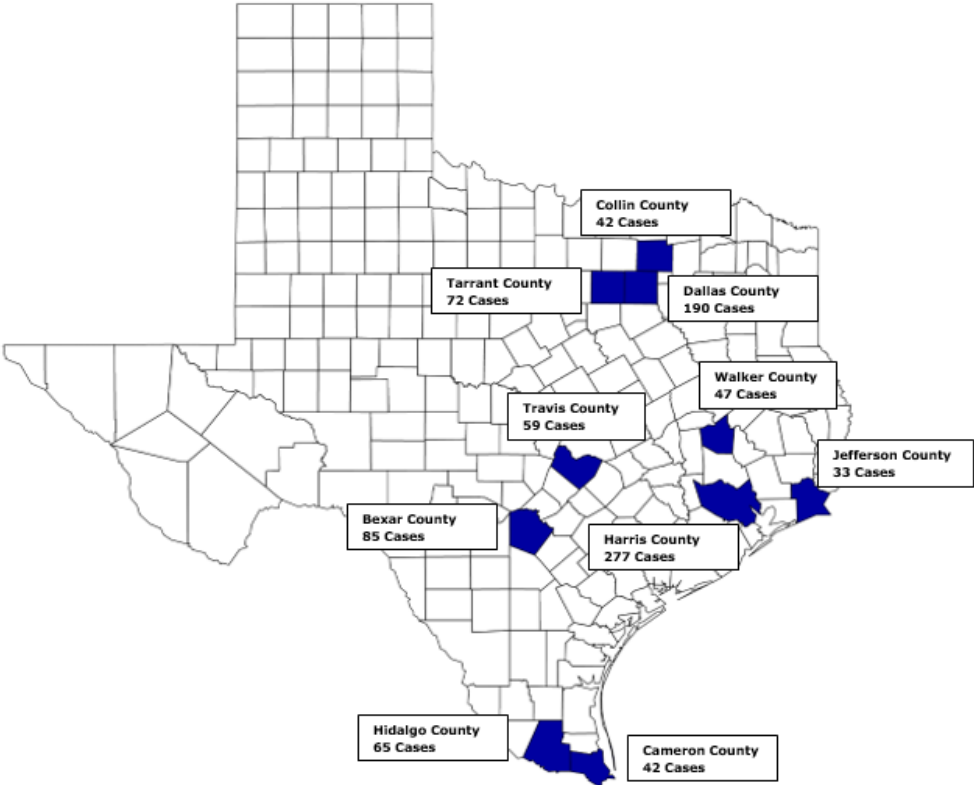
TB Cases and Percentages by Reporting Area, United States, 2023 (N=9,633)



* Includes New York City



Counties with the Highest Counts of TB Cases, 2024*

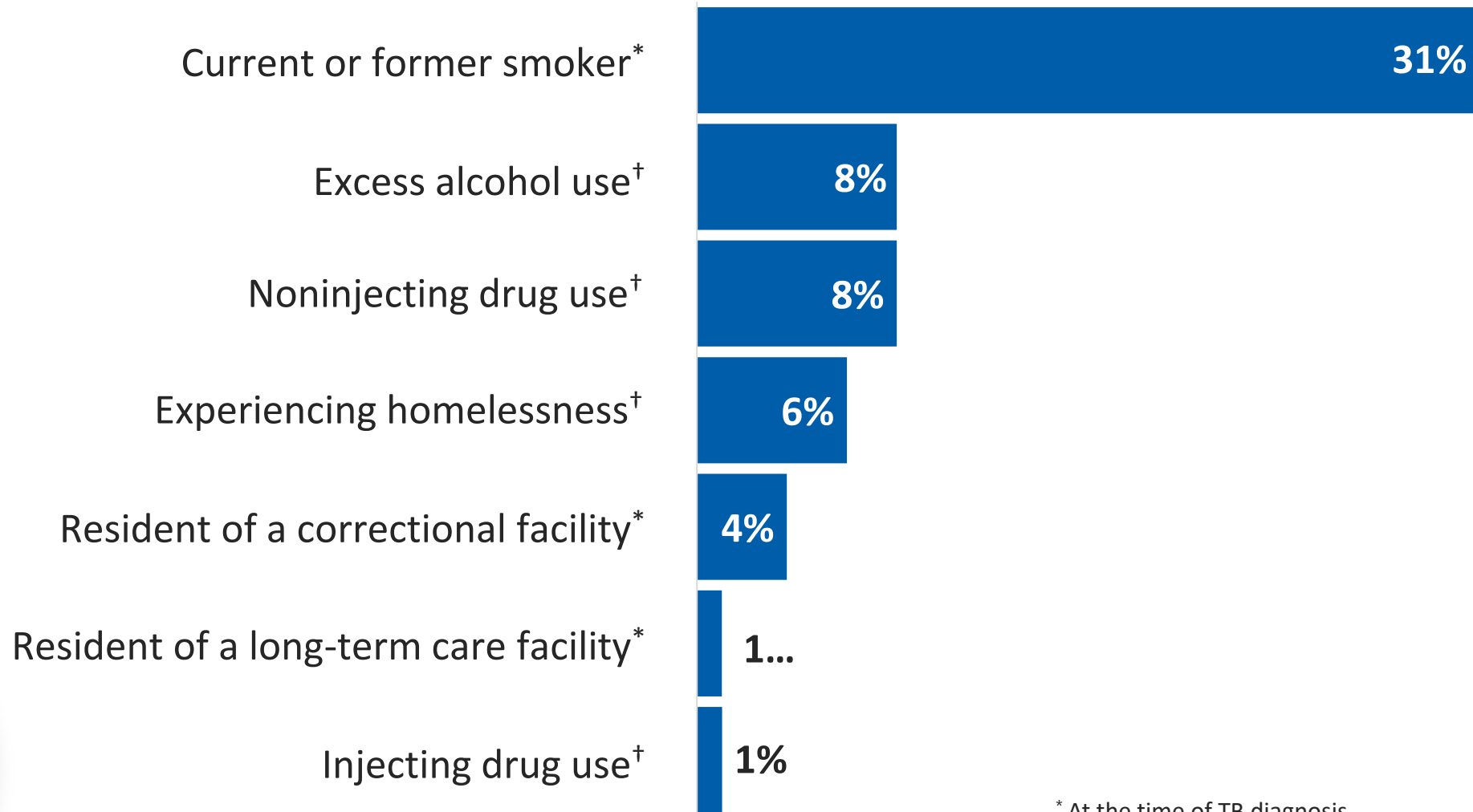


County	Reported Cases	Percent of All Cases
Harris	277	22.0%
Dallas	190	15.1%
Bexar	85	6.7%
Tarrant	72	5.7%
Hidalgo	65	5.2%
Travis	59	4.7%
Walker	47	3.7%
Cameron	42	3.3%
Colin	42	3.3%
Jefferson	33	2.6%
Total	912	72.3%

*2024 data is provisional



Percentage of Social and Behavioral Risk Factors Among Persons Aged ≥ 15 Years with TB, United States, 2023



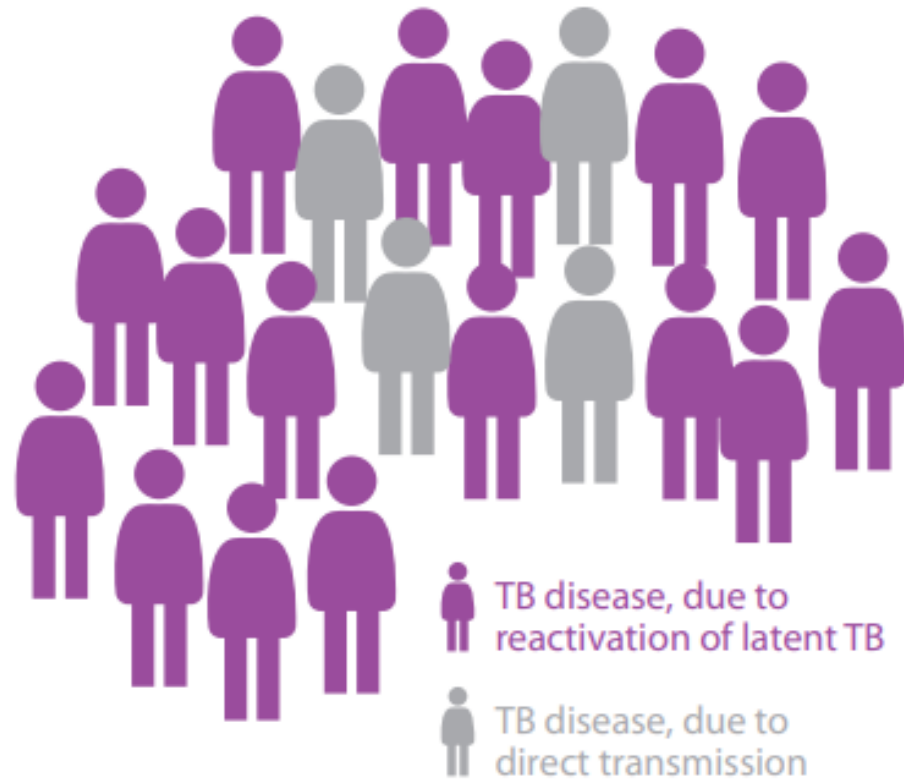
* At the time of TB diagnosis

† Within past 12 months prior to TB diagnosis



How About Latent TB in USA?

More than 80% of TB diagnosis in the U.S. are associated with long standing latent TB Infection



Tuberculosis Hides in Plain Sight

**13 million people
in the United
States live with
inactive TB**



**1 in 10 people with
inactive TB will get sick
with active TB disease**



Who is responsible for the treatment of TB?

“The responsibility for successful treatment of TB is placed primarily on **the provider** or program initiating treatment **rather than on** the patient”



The Reason Why We Are Here According to ATS/CDC/IDSA

“Strategy : **Patient-Centered Care and Case Management should be used**”

“Utilize case management interventions during treatment of patients with Tuberculosis”

Case Management:

Strategy to help patients to complete TB treatment. Patient education/counseling, field/home visits, integration/coordination of care with specialists and medical home, patient reminders, incentives/enabler.



Nurse Case Manager

Public Health Nurses coordinate services for the patient with TB from initial presentation to completion of Treatment

This ongoing coordination ensures comprehensive care, addressing both medical and social needs, and supports successful treatment outcomes

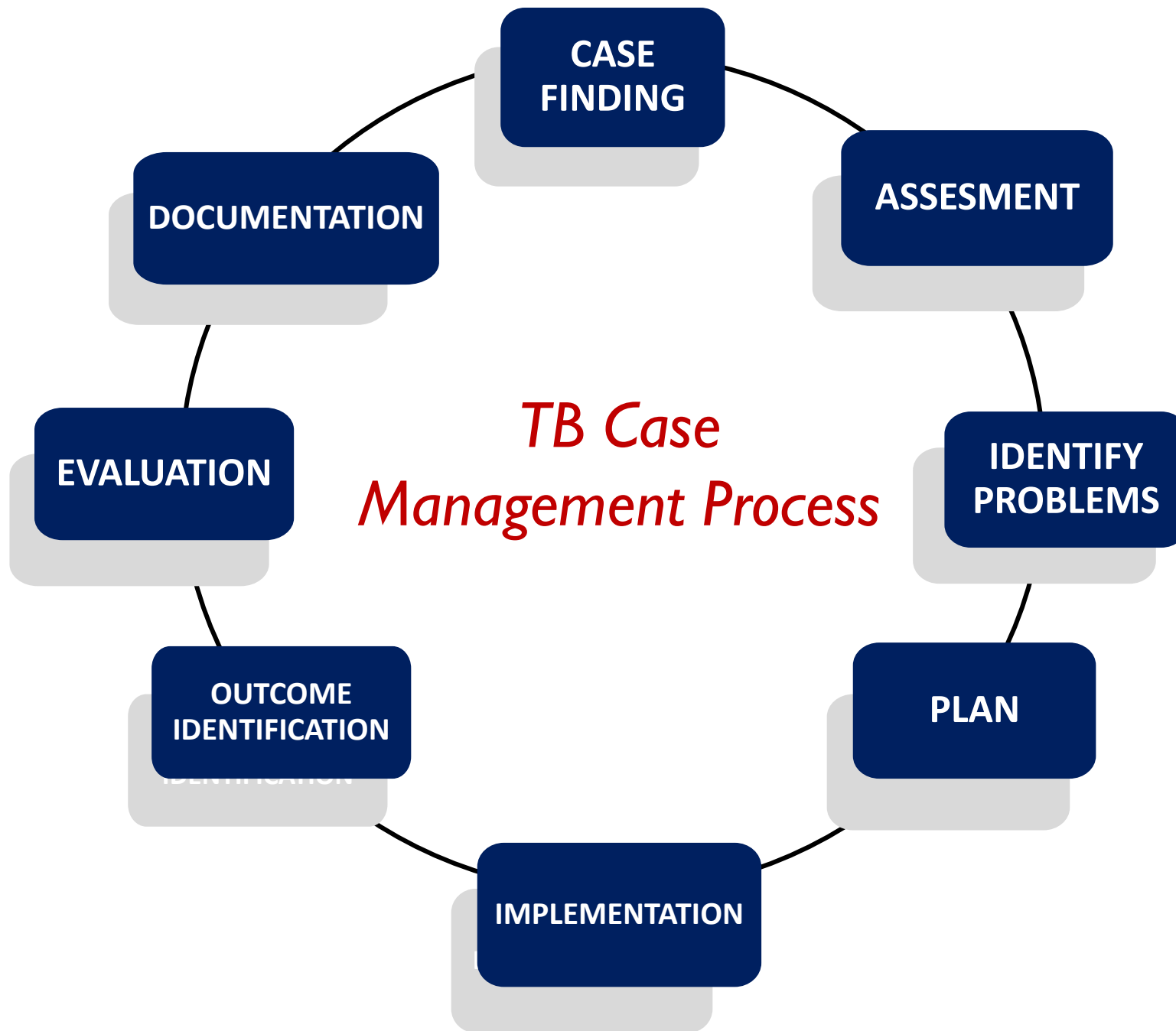
2016 ATS/CDC/IDSA *TB Treatment Guidelines* August 2016



Goals of TB Case Management

- Treat patients with TB according with current TB Guidelines
- Complete treatment in appropriate time frames
- Prevent progression of TB and drug resistant
- Prevent transmission of TB with effective Contact Investigation (CI)
- Educate patient, family and community about TB





Co-morbidities

Lost to Follow up

Adverse reactions

SDO's

CONTROL ORDERS

BI National

CALM

Resource

Educator

Monitor Labs

Nurse Case Manager

Border Crossing

Consults

Referrals

Unhoused

DOT

B-PAL

Learner

Cavitary

Contacts

Advocate

DECISION MAKING



THANK YOU!

